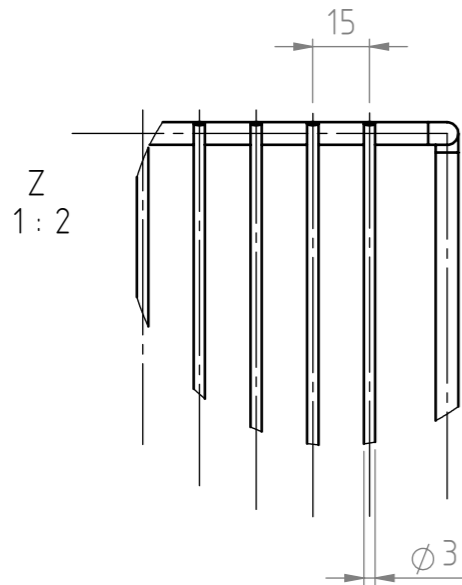
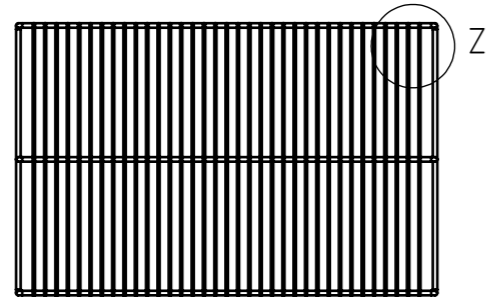
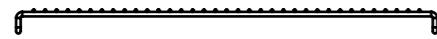
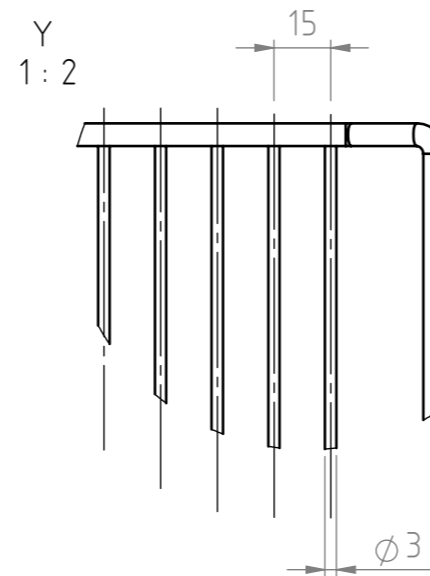
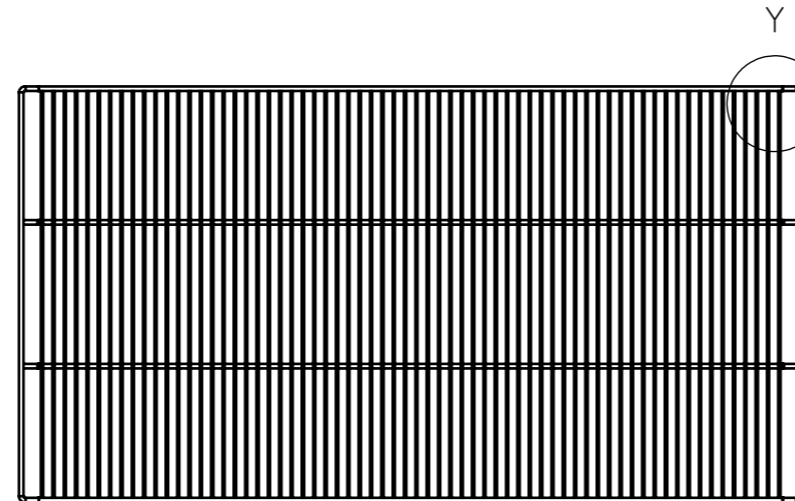
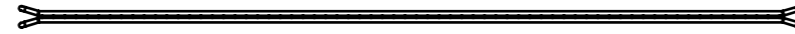


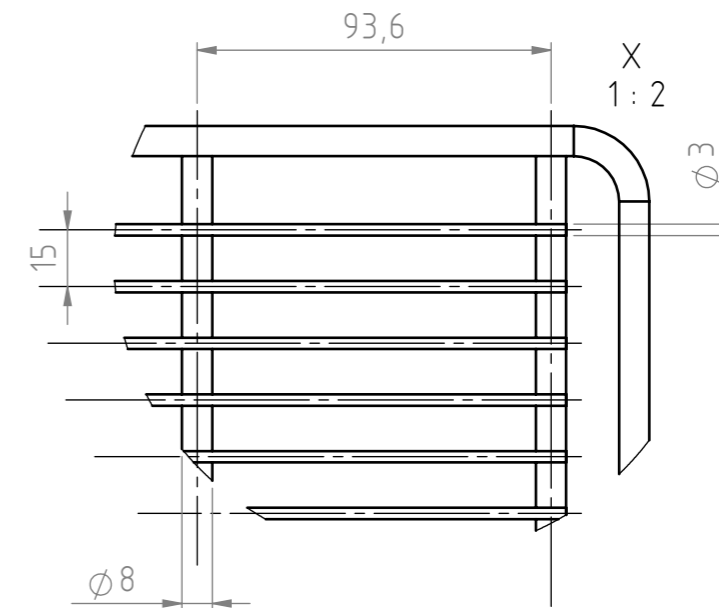
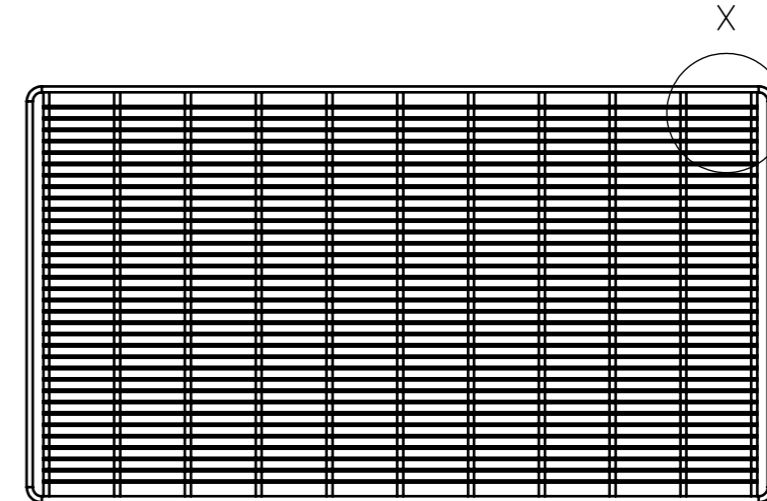
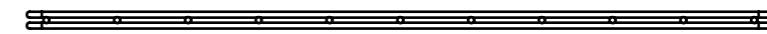
Size 30 - 260/HPP400



Size 450 - 750/HPP1060




reinforced size 110 - UF1060 ^(A)



| effective area of grids (standard equipment) | | |
|--|-------|-------|
| size | width | depth |
| 30 | 360 | 205 |
| 55/75 | 360 | 282 |
| 110/160 | 510 | 358 |
| 260/HPP400 | 600 | 453 |
| 450/750/HPP1060 | 975 | 538 |
| effective area reinforced grids | | |
| 110/160 | 498 | 344 |
| 260 | 596 | 440 |
| 450/750 | 944 | 534 |
| UF1060 | 944 | 792 |

(B)

(A)

Distribué par :
 Z.A de Gesvrine - 4 rue Képler - B.P.4125
 44241 La Chapelle-sur-Erdre Cedex - France
 t. : +33 (0)2 40 93 53 53 | f. : +33 (0)2 40 93 41 00
 commercial@humeau.com

 www.humeau.com

Geprüft KL "C "

| | | | | | | | | |
|--------------------|--|---|--|--|--|---|---------------------------|---|
| Verwendung / usage | | Diese Zeichnung darf ohne unsere Genehmigung weder vervielfältigt noch dritten Personen zugänglich gemacht werden | | It is neither allowed to copy this drawing nor to make it available to third persons without permission. | | Maßstab/ scale 1:10 | Gewicht/ weight 4008.43 g | Toleranz nach/ applicable tolerance DIN 2768 mK |
| Zubehoer | | Anderungen vorbehalten | | Subject to change | | Werkstoff/material | | |
| - | | - | | Datum: | | Benennung/description | | |
| - | | - | | Erstellt 17.04.2013 | | Uebersicht Gitterroste / overview grids | | |
| - | | - | | Geändert 20.04.2017 | | | | |
| - | | - | | Geprüft 21.04.2017 | | | | |
| - | | - | | Freigabe - | | Zeichnungsnummer/drawing number | | |
| - | | - | | 30.10.2013 | | Artikelnummer/item number | | Blatt/sheet |
| A | | 1060 ergänzt | | 22.12.2014 | | D31925 | | 1/2 A3 |
| B | | Stueckliste angepasst | | 01.03.2017 | | Zeichnungsversion: 28 | | Artikelversion: 22 |
| C | | Bitte freigeben | | 20.04.2017 | | Ers. f.: | | Ers. d.: |
| Zust: | | Änderung: | | Datum: | | Name: | | |

menmert
 GmbH+Co.KG
 Postfach 1720
 D-91107 Schwabach

| | |
|--------|---|
| Geräte | UN UF IN IF IPP HPP IPS ICP ICH ICO |
| Größen | 30 50 55 75 105 110 150 160 240 260 450 750 |