

Centrifuge Gerber Universal

Multipurpose centrifuge for the dairy laboratory with 3 pre-programmed speeds for:

- Gerber Butyrometers (350 x g)
 - Solubility index in milk powder (164 x g)
 - Extraction tubes Roese-Gottlieb/Mojonnier (80 x g)
- 1 variable speed range (200-1300 rpm), on request



Specifications:

Control	Microprocessor control
Timer	0 - 255 minutes
Power	115/230 VAC
Frequency	60/50 Hz
Heating (optional)	1200 W adjustable up to 65 °C
Dimensions (WxDxH)	640 x 640 x 450 mm
Weight (without rotor)	47 kg
Universal rotor	without inserts
Special rotor	with inserts
Warranty	1 year
Test certificate	CE

Order data :

Order No.	Type
03.3110-12	230 VAC/50 Hz, without heating and with universal rotor for 12 positions without inserts (order separately)
03.3110-36	230 VAC/50 Hz, without heating and with special rotor incl. 36 sleeves
03.3111-12	115 VAC/60 Hz, without heating and with universal rotor for 12 positions without inserts (order separately)
03.3111-36	115 VAC/60 Hz, without heating and with special rotor incl. 36 sleeves
03.3112-12	230 VAC/50 Hz, with heating and universal rotor for 12 positions without inserts (order separately)
03.3112-36	230 VAC/50 Hz, with heating and special rotor incl. 36 sleeves
03.3113-12	115 VAC/60 Hz, with heating and universal rotor for 12 positions without inserts (order separately)
03.3113-36	115 VAC/60 Hz, with heating and special rotor incl. 36 sleeves

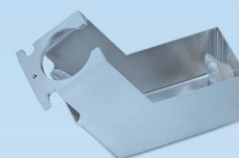
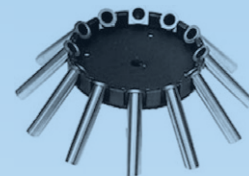
Accessories for centrifuge Gerber Universal

Universal rotor for centrifuge Gerber Universal

Order No.	Type
03.3300	12 places, without inserts (order separately)

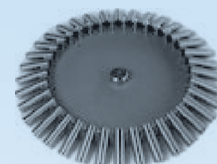
Inserts for Universal rotor (order separately)

Order No.	Type
03.1630	Butyrometer insert Gerber sleeve with ring, made of stainless steel, Ø int. 26 mm, for butyrometers, solubility tubes and Roese-Gottlieb tubes
03.1631	Insert for ADPI solubility tubes made of stainless steel, Ø int. 31 mm, for solubility tubes according to ADPI
03.1632	Mojonnier insert insert with holder made of aluminum, for Mojonnier tubes
03.1633	Babcock insert made of stainless steel, Ø int. 38 mm, for babcock bottles



Special rotor for centrifuge Gerber Universal

Order No.	Type
03.3340	Complete with 36 swing out places, made of stainless steel, for Gerber butyrometers and solubility tubes according to Gerber
03.3341	Sleeve for special rotor, made of stainless steel, Ø int. 26 mm



Distribué par :



Z.A de Gesvrine – 4 rue Képler – B.P.4125
44241 La Chapelle-sur-Erdre Cedex – France
t. : +33 (0)2 40 93 53 53 | f. : +33 (0)2 40 93 41 00
commercial@humeau.com

w w w . h u m e a u . c o m

