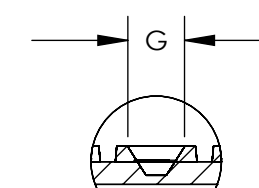
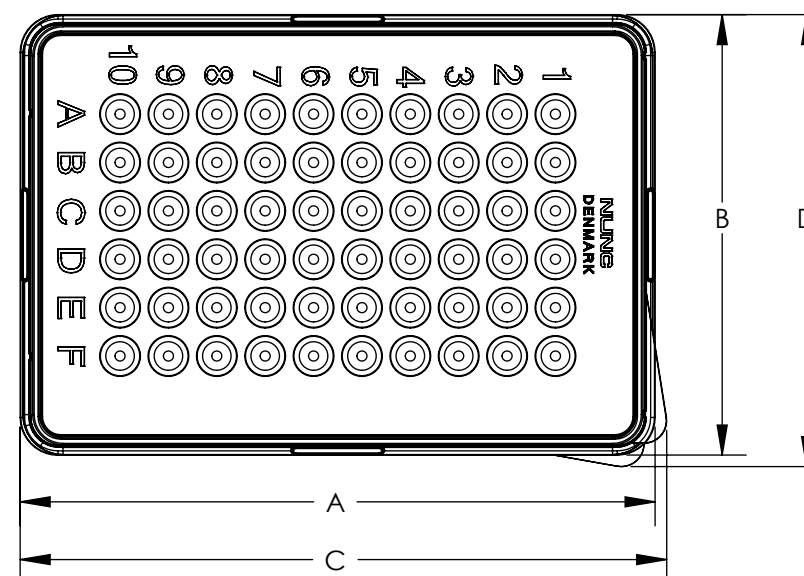
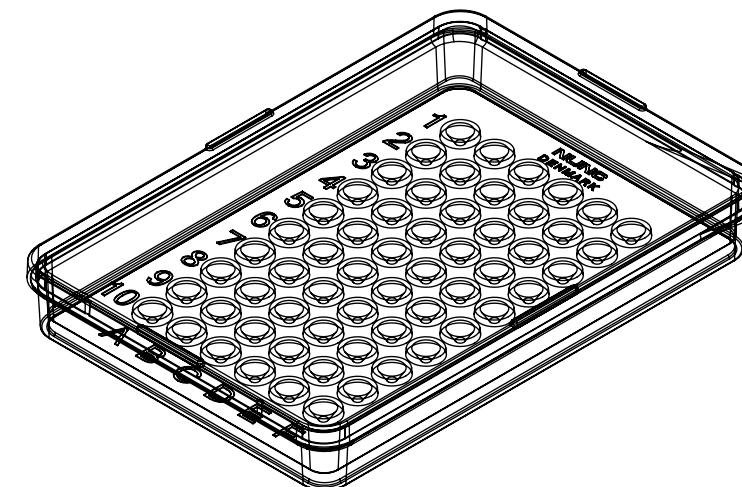


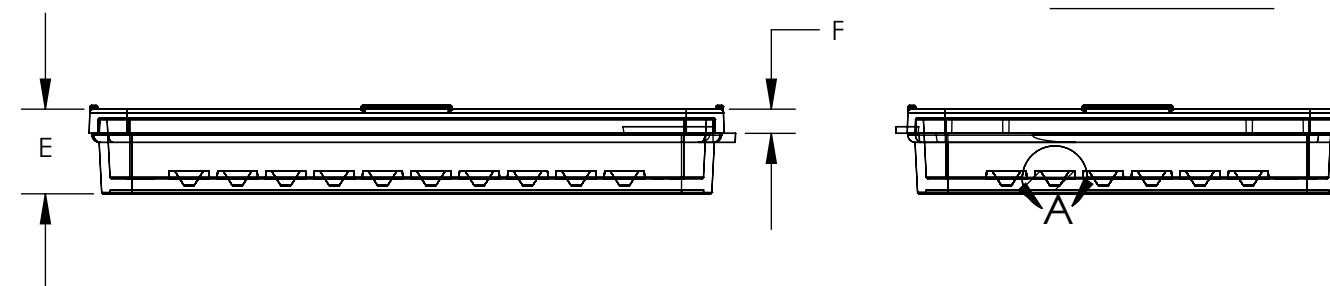
CATALOG NUMBER	SUGGESTED WORKING VOL. (μL)	NUMBER OF WELLS	MATERIALS	
			TRAY	LID
163118	8	60	PS	PS

	INCH	MM
A (LENGTH).....:	3.31	84.1
B (WIDTH).....:	2.29	5.82
C (LENGTH).....:	3.37	85.6
D (WIDTH).....:	2.35	59.7
E (HEIGHT).....:	0.44	11.2
G (LID HEIGHT).....:	0.13	3.3
F (DIA.).....:	0.15	3.8

1. ALL DIMENSIONS ARE NOMINAL AND IN INCHES AND MILLIMETERS UNLESS OTHERWISE NOTED.
2. THIS IS NOT A PRODUCTION DRAWING, BUT IS FOR INFORMATIONAL PURPOSES ONLY, AND IS SUBJECT TO CHANGE WITHOUT NOTICE.



DETAIL A  
SCALE 2:1



SPECS ON BACK

NOT TO SCALE

**CONFIDENTIAL**

THIS PRODUCT SPECIFICATION SHEET CONTAINS CONFIDENTIAL AND/OR PROPRIETARY INFORMATION AND IS TO BE USED ONLY FOR THE EXPRESSED PURPOSES AGREED UPON BY AN AUTHORIZED OFFICER OF THERMO FISHER SCIENTIFIC.

**ThermoFisher**  
SCIENTIFIC

Thermo Fisher Scientific  
75 Panorama Creek Drive  
Rochester, NY 14625-2385, USA

MADE	P.B.	APP'D	JMC	PSS 163118	REV. 0309
CK'D	JMC	DATE	3/17/09		

DESCRIPTION: NUNC MINITRAY NUNCLON, STERILE