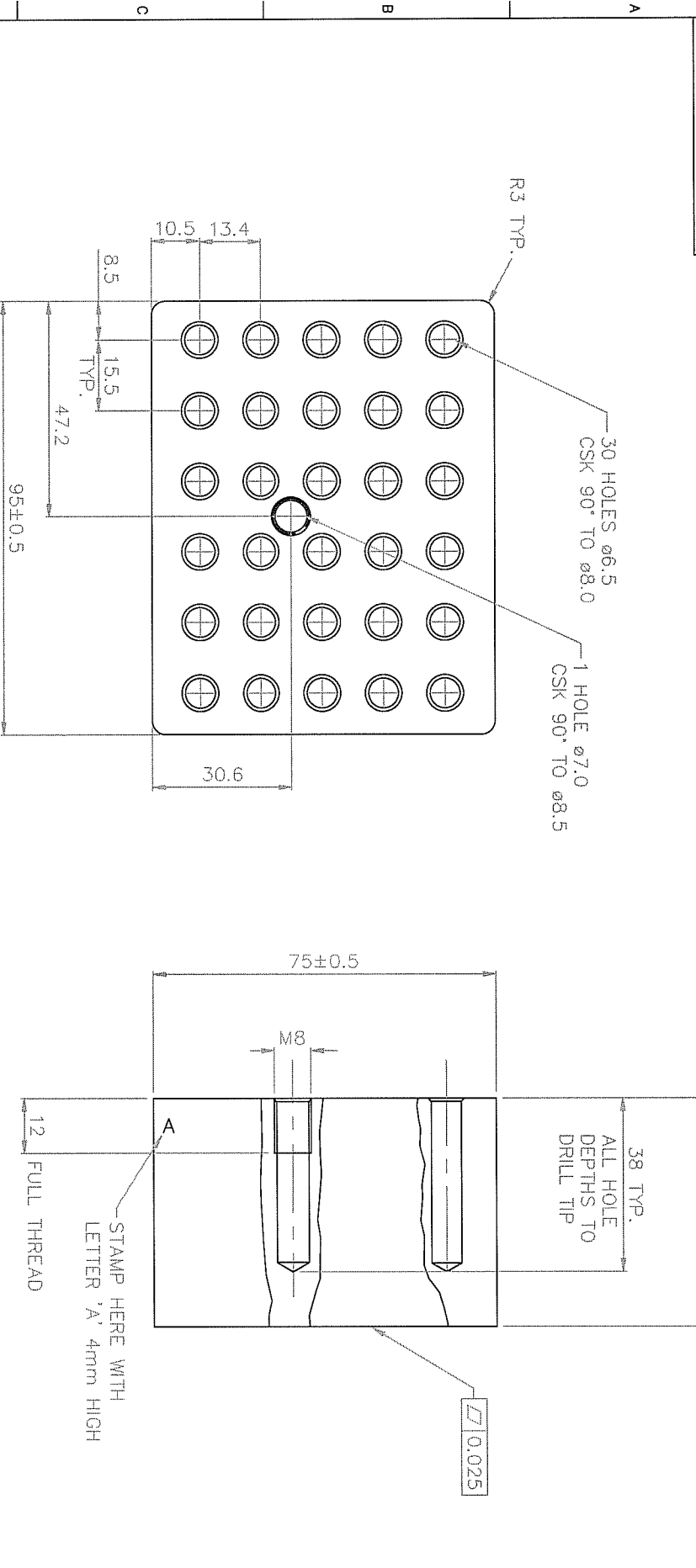


	1	2	3	4	5	6	7	No.	DATE	MOD.
DRG. No.	F3502	DO NOT SCALE THIS PRINT						7	11/07/90 15/10/03	ECN 1079 REDRAWN
								8	10/01/05	ECN 2658



FINISH – GLASS BEAD BLAST 150/100 GRIT
TOP & SIDES ONLY

SKIM BOTH SIDES

DIMENSIONS IN MILLIMETRES	TOLERANCE UNLESS OTHERWISE STATED ± 0.3	ANGLES ± 0.5°	DRILLED & PUNCHED HOLES + 0.2 - 0.0	DRG. SIZE A3		SHT 1 OF 1
				DATE	15/10/03	
SURFACE TEXTURE ✓ ALL OVER EXCEPT AS STATED	MATERIAL No. ALUM. ALLOY 6082 T6	FINISH SEE DRG. REMOVE ALL BURRS AND SHARP EDGES, BREAK CORNERS	TITLE HOT BLOCK	SCALE	1 : 1	3rd ANGLE PROJECTION
				TECHNE		

IMPORTANT

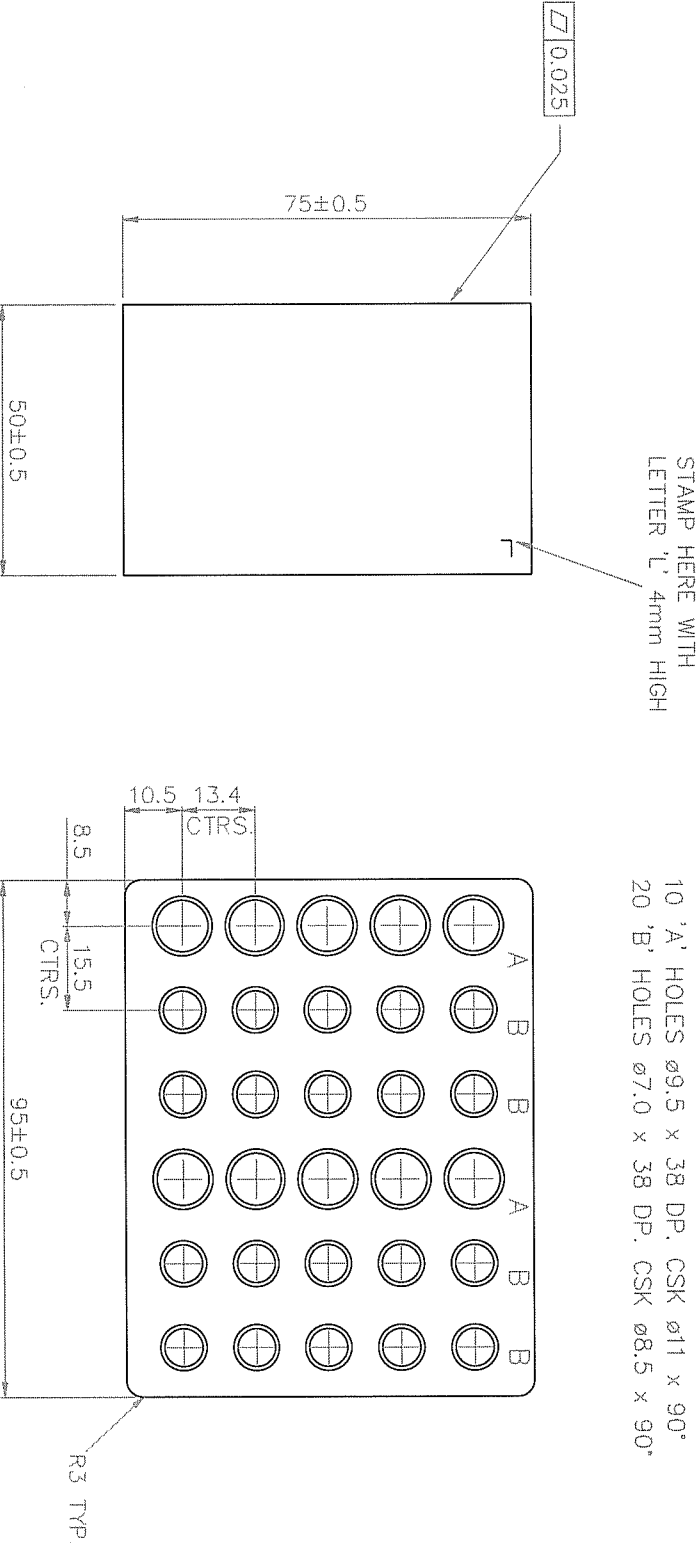
ALL WORK MUST BE CARRIED OUT TO THE DRAWINGS ENCLOSED WITH THIS ORDER AND NOT TO ANY PREVIOUSLY ISSUED.

ALL DRAWINGS TO BE RETURNED TO TECHNE ON COMPLETION OF WORK.

PROPRIETARY NOTE

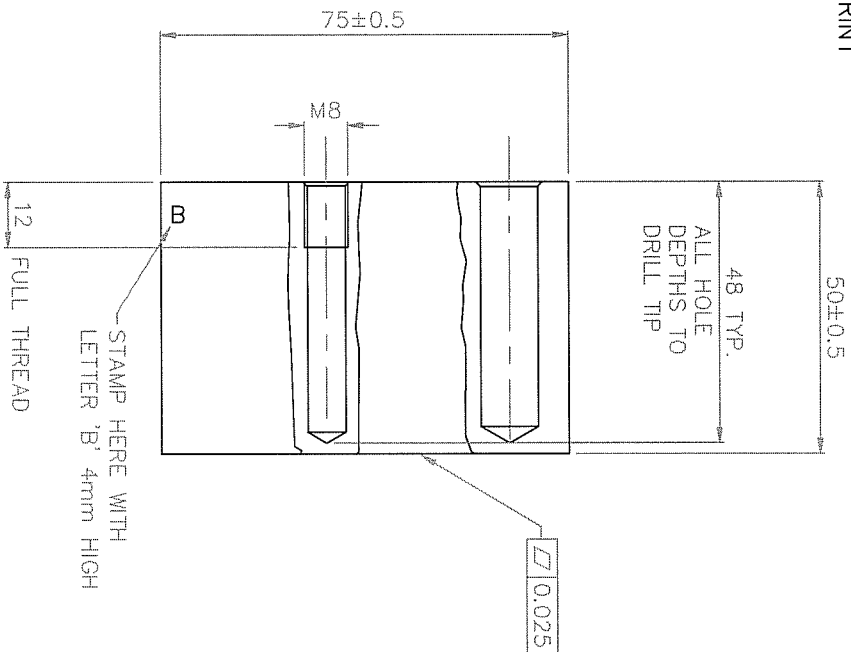
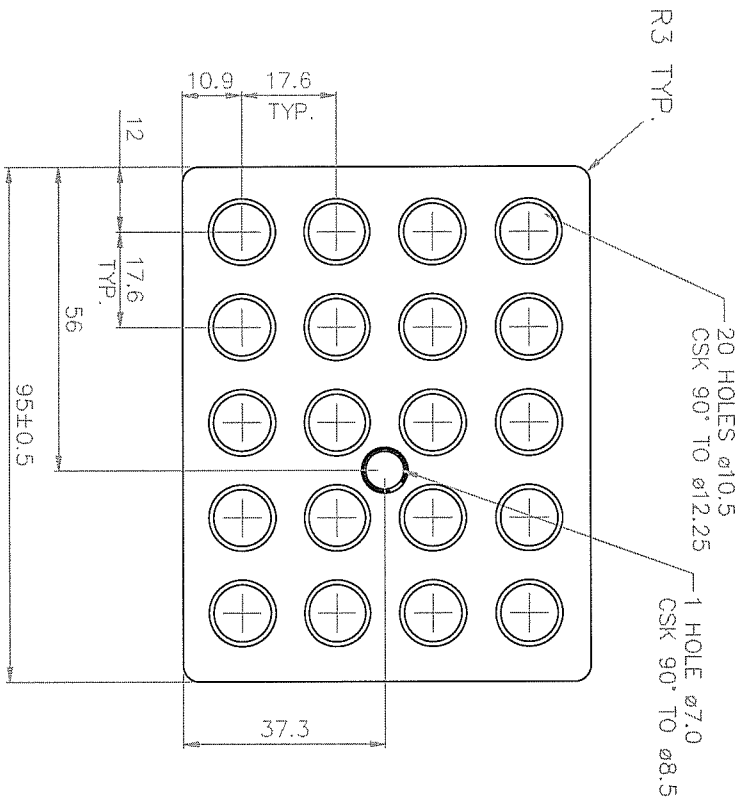
THIS DRAWING IS THE PROPERTY OF TECHNE AND MUST NOT BE USED COPIED OR DISCLOSED WITHOUT THEIR WRITTEN CONSENT.

No. USED ON

1		2		3		4		5		6		7				
DRG. No. F4461		DO NOT SCALE THIS PRINT										No.	DATE	MOD.		
													1	07/07/86	REDRAWN	
													2	10/01/05	ECN 2658	
NOTE - ALL HOLE DEPTHS TO DRILL TIP																
10 'A' HOLES $\varnothing 9.5 \times 38$ DP, CSK $\varnothing 11 \times 90^\circ$																
20 'B' HOLES $\varnothing 7.0 \times 38$ DP, CSK $\varnothing 8.5 \times 90^\circ$																
																
FINISH - GLASS BEAD BLAST 150/100 GRIT																
SKIM ALL FACES																
TOP & SIDES ONLY																
DIMENSIONS IN MILLIMETRES		TOLERANCE UNLESS OTHERWISE STATED ± 0.3			ANGLES $\pm 0.5^\circ$		DRILLED & PUNCHED HOLES $+ 0.2 - 0.0$			DRG SIZE A3		No. DATE MOD.				
SURFACE TEXTURE $\sqrt{R_a}$ ALL OVER EXCEPT AS STATED		MATERIAL No. ALUM. ALLOY 6082 T6			FINISH SEE DRG. REMOVE ALL BURRS AND SHARP EDGES, BREAK CORNERS.		TITLE HOT BLOCK			DATE 21/10/03		DRAWN A.NODEN		SHT 1 OF 1		
SCALE 1:1 3rd ANGLE PROJECTION																
TECHNE																
IMPORTANT ALL WORK MUST BE CARRIED OUT TO THE DRAWINGS ENCLOSED WITH THIS ORDER AND NOT TO ANY PREVIOUSLY ISSUED. ALL DRAWINGS TO BE RETURNED TO TECHNE ON COMPLETION OF WORK.																
PROPRIETARY NOTE THIS DRAWING IS THE PROPERTY OF TECHNE AND MUST NOT BE USED COPIED OR DISCLOSED WITHOUT THEIR WRITTEN CONSENT.																
No. USED ON OFF																
DRG. No. F4461																

	1	2	3	4	5	6	7	No.	DATE	MOD.
DRG. No.	F3503							7	11/07/90	ECN 1079
								15/10/03	REDRAWN	
								8	10/01/05	ECN 2658

DO NOT SCALE THIS PRINT



FINISH – GLASS BEAD BLAST 150/100 GRIT
TOP & SIDES ONLY

SKIM BOTH SIDES

DIMENSIONS IN MILLIMETRES	TOLERANCE UNLESS OTHERWISE STATED ± 0.3	ANGLES ± 0.5°	DRILLED & PUNCHED HOLES + 0.2 - 0.0	DRG SIZE A3		SHT 1 OF 1	
				DATE	15/10/03	DRAWN	A.NODEN
				SCALE	1 : 1	3rd ANGLE PROJECTION	
				TECHNE			
SURFACE TEXTURE ✓ ALL OVER EXCEPT AS STATED	MATERIAL No. ALUM. ALLOY 6082 T6	FINISH SEE DRG. REMOVE ALL BURRS AND SHARP EDGES, BREAK CORNERS.	TITLE HOT BLOCK				

TECHNE

DRG. No.
F3503

SHT 1 OF 1

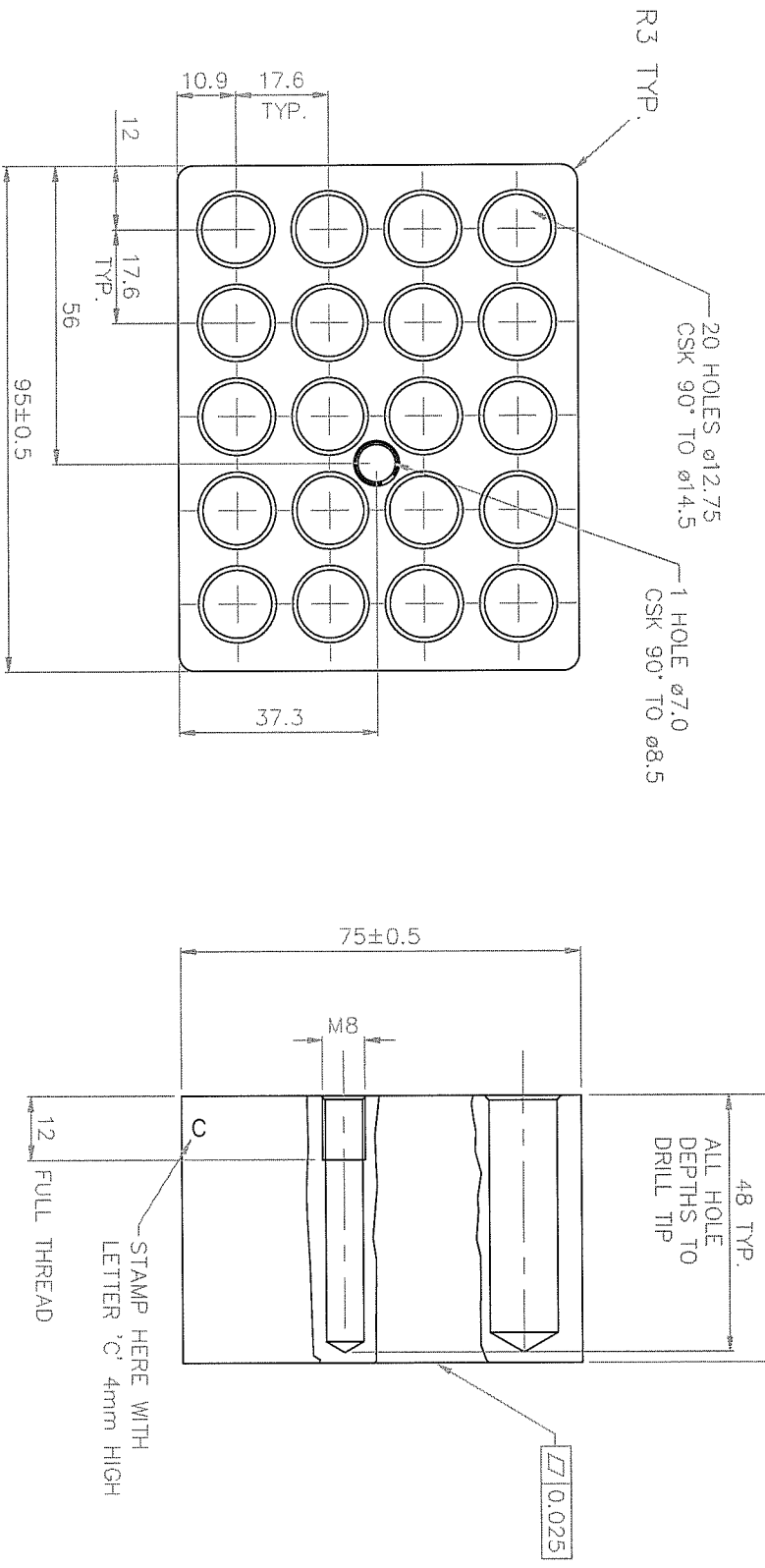
PROPRIETARY NOTE
THIS DRAWING IS THE
PROPERTY OF TECHNE AND
MUST NOT BE USED COPIED
OR DISCLOSED WITHOUT THEIR
WRITTEN CONSENT.

No. USED ON
OFF

IMPORTANT
ALL WORK MUST BE CARRIED
OUT TO THE DRAWINGS
ENCLOSED WITH THIS ORDER
AND NOT TO ANY PREVIOUSLY
ISSUED.
ALL DRAWINGS TO BE
RETURNED TO TECHNE ON
COMPLETION OF WORK.

	1	2	3	4	5	6	7	No.	DATE	MOD.
DRG. No.	F3504							7	11/07/90 15/10/03	ECN 1079 REDRAWN
								8	10/01/05	ECN 2658

DO NOT SCALE THIS PRINT



FINISH – GLASS BEAD BLAST 150/100 GRIT
TOP & SIDES ONLY

SKIM ALL FACES

DIMENSIONS IN MILLIMETRES	TOLERANCE UNLESS OTHERWISE STATED ± 0.3	ANGLES ± 0.5°	DRILLED & PUNCHED HOLES + 0.2 - 0.0	DRG. SIZE A3	SHT 1 OF 1
SURFACE TEXTURE ✓ ALL OVER EXCEPT AS STATED	MATERIAL No. ALUM. ALLOY 6082 T6	FINISH SEE DRG. REMOVE ALL BURRS AND SHARP EDGES, BREAK CORNERS.	TITLE HOT BLOCK	DATE 15/10/03	DRAWN A.NODEN
				SCALE 1:1	3rd ANGLE PROJECTION
				TECHNE	

IMPORTANT

ALL WORK MUST BE CARRIED OUT TO THE DRAWINGS ENCLOSED WITH THIS ORDER AND NOT TO ANY PREVIOUSLY ISSUED.

ALL DRAWINGS TO BE RETURNED TO TECHNE ON COMPLETION OF WORK.

PROPRIETARY NOTE

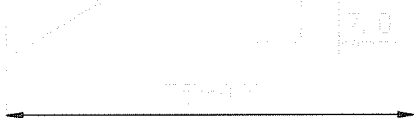
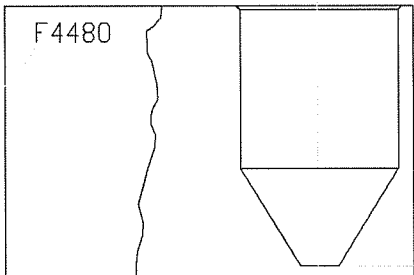
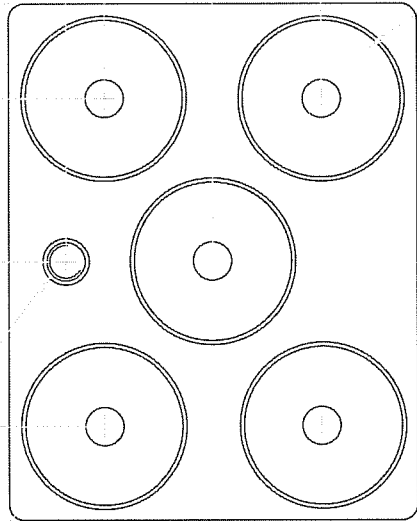
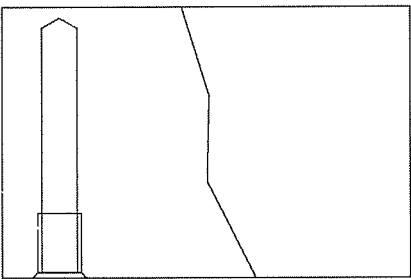
THIS DRAWING IS THE PROPERTY OF TECHNE AND MUST NOT BE USED COPIED OR DISCLOSED WITHOUT THEIR WRITTEN CONSENT.

No.	USED ON
OFF	

DRG. No.
F3504

DO NOT SCALE THIS PRINT

No.	DATE	MOD.
1	26/1/00 ECN 1957	
2	07/01/05 ECN 2658	



IMPORTANT
ALL WORK MUST BE CARRIED OUT TO THE DRAWINGS ENCLOSED WITH THIS ORDER AND NOT TO ANY PREVIOUSLY ISSUED .
ALL DRAWINGS TO BE RETURNED TO TECHNE (CAMBRIDGE) LTD. ON COMPLETION OF WORK.

PROPRIETARY NOTE
THIS DRAWING IS THE PROPERTY OF TECHNE (CAMBRIDGE) LTD AND MUST NOT BE USED COPIED OR DISCLOSED WITHOUT THEIR WRITTEN CONSENT.

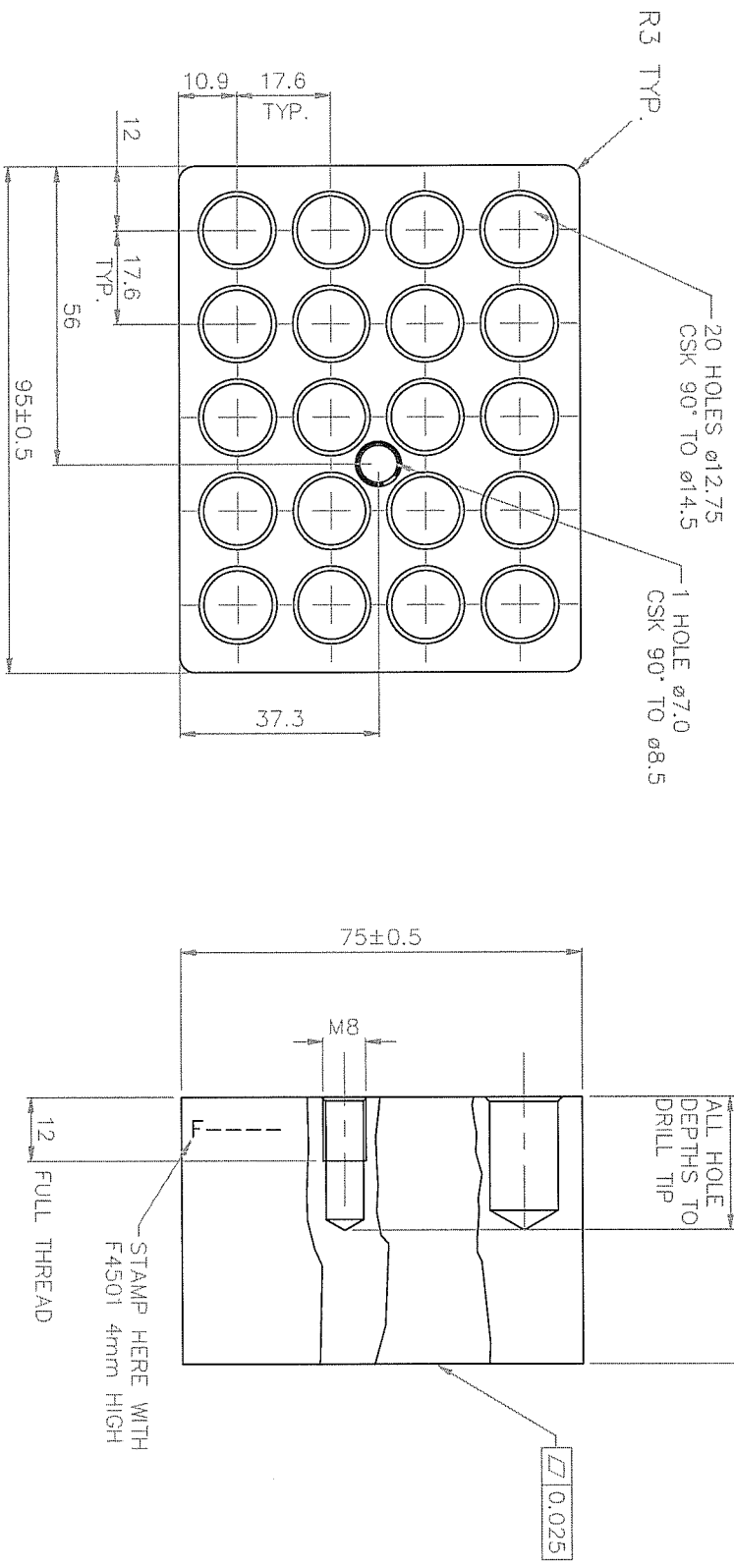
No. USED ON
OFF

DRG. No. F4480

DIMENSIONS IN MILLIMETRES		TOLERANCE UNLESS OTHERWISE STATED		2 DECIMAL PLACES (e.g. 0.60) ± 0.1 1 DECIMAL PLACE (e.g. 0.6) ± 0.2		FRACTIONS (e.g. 5 OR 5 1/2) ± 0.4 ANGLES ± 30 MINS		DATE 23/8/99		DRAWN R.W.	
SURFACE TEXTURE ✓ ALL OVER EXCEPT AS STATED		MATERIAL No. ALUM ALLOY 6082 T6		FINISH BLACK ANODISE REMOVE ALL BURRS AND SHARP EDGES, BREAK CORNERS.		TITLE INSERT BLOCK 50ML FALCON		DATE		CHECKED	
								SCALE 1:1		3rd ANGLE PROJECTION	
										TECHNE (CAMBRIDGE) LTD.	

1	2	3	4	5	6	7	No.	DATE	MOD.
DRG. No. F4501							1	28/10/03	REDRAWN
							2	07/01/05	ECN 2658

DO NOT SCALE THIS PRINT



FINISH – GLASS BEAD BLAST 150/100 GRIT
TOP & SIDES ONLY

SKIM ALL FACES

DIMENSIONS IN MILLIMETRES	TOLERANCE UNLESS OTHERWISE STATED ± 0.3		ANGLES ± 0.5°	DRILLED & PUNCHED HOLES + 0.2 - 0.0	DRG. SIZE A3		SHT 1 OF 1	
SURFACE TEXTURE ✓ ALL OVER EXCEPT AS STATED	MATERIAL No. ALUM. ALLOY 6082 T6	FINISH SEE DRG. REMOVE ALL BURRS AND SHARP EDGES, BREAK CORNERS.	TITLE HOT BLOCK	DATE 28/10/03				
				DRAWN		A.NODEN		
				SCALE 1 : 1 3rd ANGLE PROJECTION				
TECHNE								

IMPORTANT

ALL WORK MUST BE CARRIED OUT TO THE DRAWINGS ENCLOSED WITH THIS ORDER AND NOT TO ANY PREVIOUSLY ISSUED.

ALL DRAWINGS TO BE RETURNED TO TECHNE ON COMPLETION OF WORK.

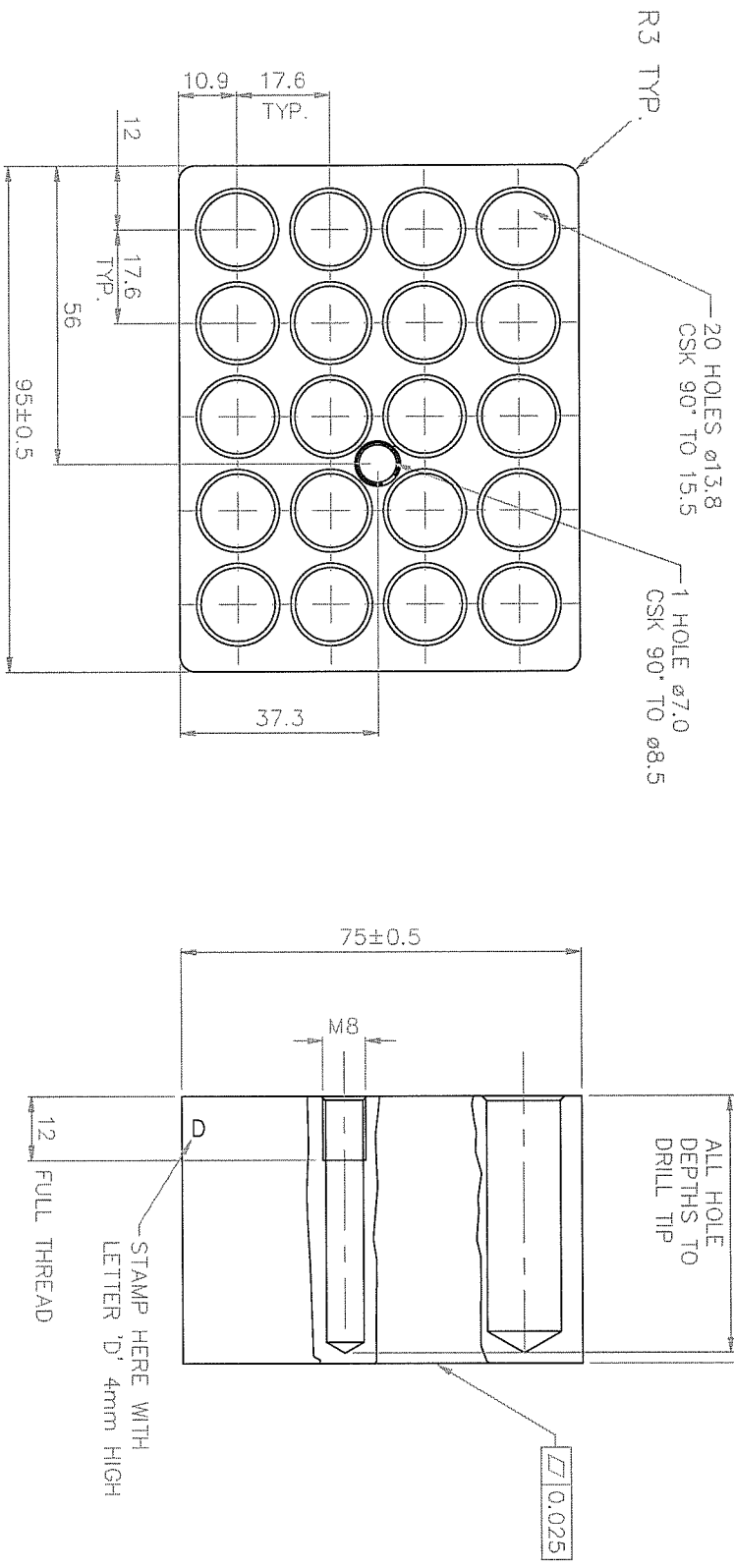
PROPRIETARY NOTE

THIS DRAWING IS THE PROPERTY OF TECHNE AND MUST NOT BE USED COPIED OR DISCLOSED WITHOUT THEIR WRITTEN CONSENT.

No.	USED ON
OFF	

DRG. No. F4501

	1	2	3	4	5	6	7	No.	DATE	MOD.
DRG. No.	F3505	DO NOT SCALE THIS PRINT						7	11/07/90 15/10/03	ECN 1079 REDRAWN
								8	10/01/05	ECN 2658



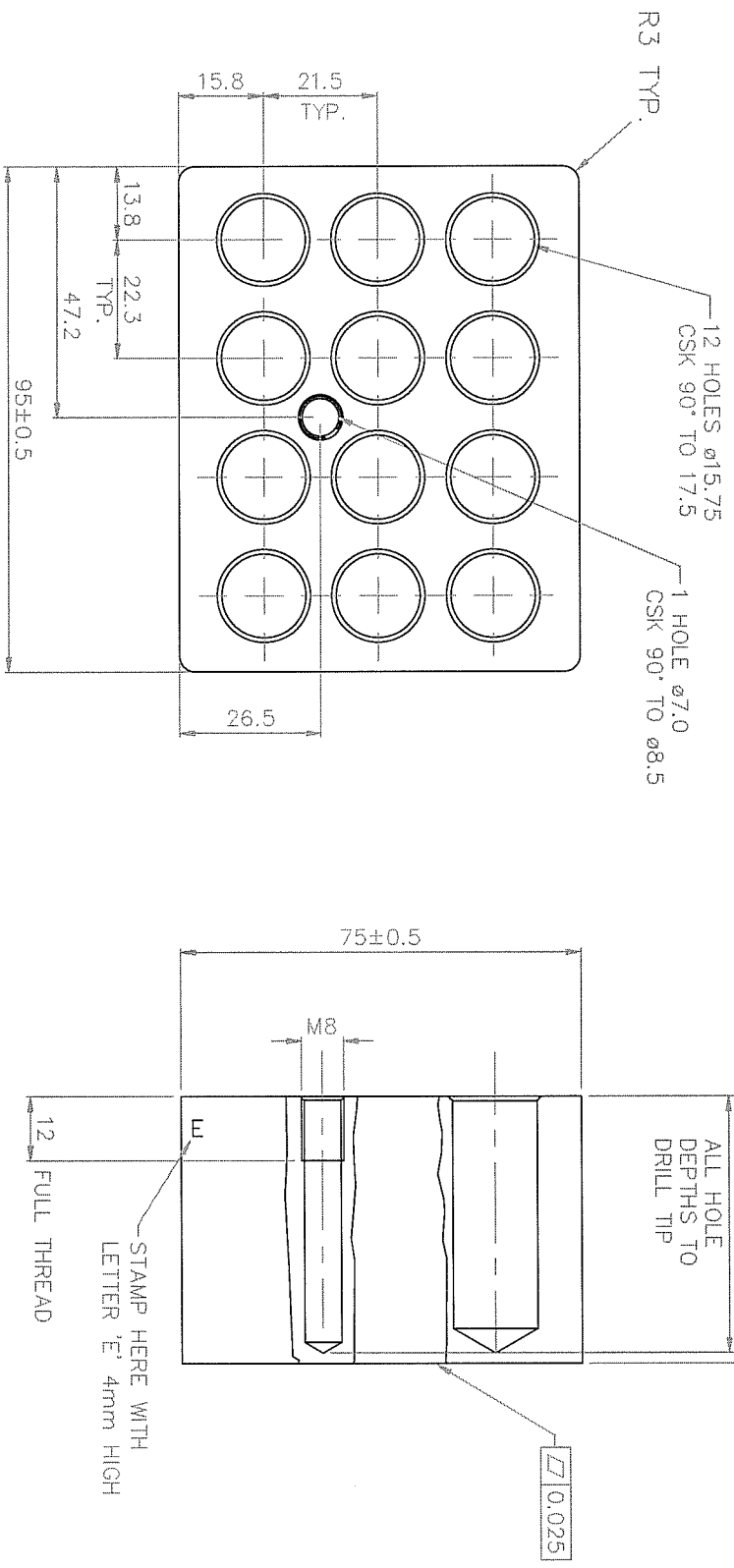
FINISH — GLASS BEAD BLAST 150/100 GRIT
TOP & SIDES ONLY

SKIM BOTH SIDES

DIMENSIONS IN MILLIMETRES	TOLERANCE UNLESS OTHERWISE STATED ± 0.3	ANGLES $\pm 0.5^\circ$	DRILLED & PUNCHED HOLES + 0.2 - 0.0	DRG. SIZE A3		SHT 1 OF 1		
				DATE	15/10/03		DRAWN	A.NODEN
				SCALE	1 : 1		3rd ANGLE PROJECTION	
SURFACE TEXTURE ✓ ALL OVER EXCEPT AS STATED	MATERIAL No. ALUM. ALLOY 6082 T6	FINISH SEE DRG. REMOVE ALL BURRS AND SHARP EDGES, BREAK CORNERS.	TITLE HOT BLOCK		TECHNE			

IMPORTANT	
ALL WORK MUST BE CARRIED OUT TO THE DRAWINGS ENCLOSED WITH THIS ORDER AND NOT TO ANY PREVIOUSLY ISSUED.	
ALL DRAWINGS TO BE RETURNED TO TECHNE ON COMPLETION OF WORK.	
PROPRIETARY NOTE	
THIS DRAWING IS THE PROPERTY OF TECHNE AND MUST NOT BE USED COPIED OR DISCLOSED WITHOUT THEIR WRITTEN CONSENT.	
No. OFF	USED ON
DRG. No. F3505	

	1	2	3	4	5	6	7	No.	DATE	MOD.
DRG. No.	F3506	DO NOT SCALE THIS PRINT						7	11/07/90 15/10/03	ECN 1079 REDRAWN
								8	10/01/05	ECN 2658



FINISH – GLASS BEAD BLAST 150/100 GRIT
TOP & SIDES ONLY

SKIM BOTH SIDES

DIMENSIONS IN MILLIMETRES	TOLERANCE UNLESS OTHERWISE STATED ± 0.3	ANGLES ± 0.5°	DRILLED & PUNCHED HOLES + 0.2 - 0.0	DRG. No.	DATE	SCALE	15/10/03	1:1	3rd ANGLE PROJECTION
SURFACE TEXTURE ✓ ALL OVER EXCEPT AS STATED	MATERIAL No. ALUM. ALLOY 6082 T6	FINISH SEE DRG. REMOVE ALL BURRS AND SHARP EDGES, BREAK CORNERS.	TITLE HOT BLOCK	F3506	15/10/03	1:1	15/10/03	1:1	3rd ANGLE PROJECTION
				SH1 1 OF 1					

IMPORTANT

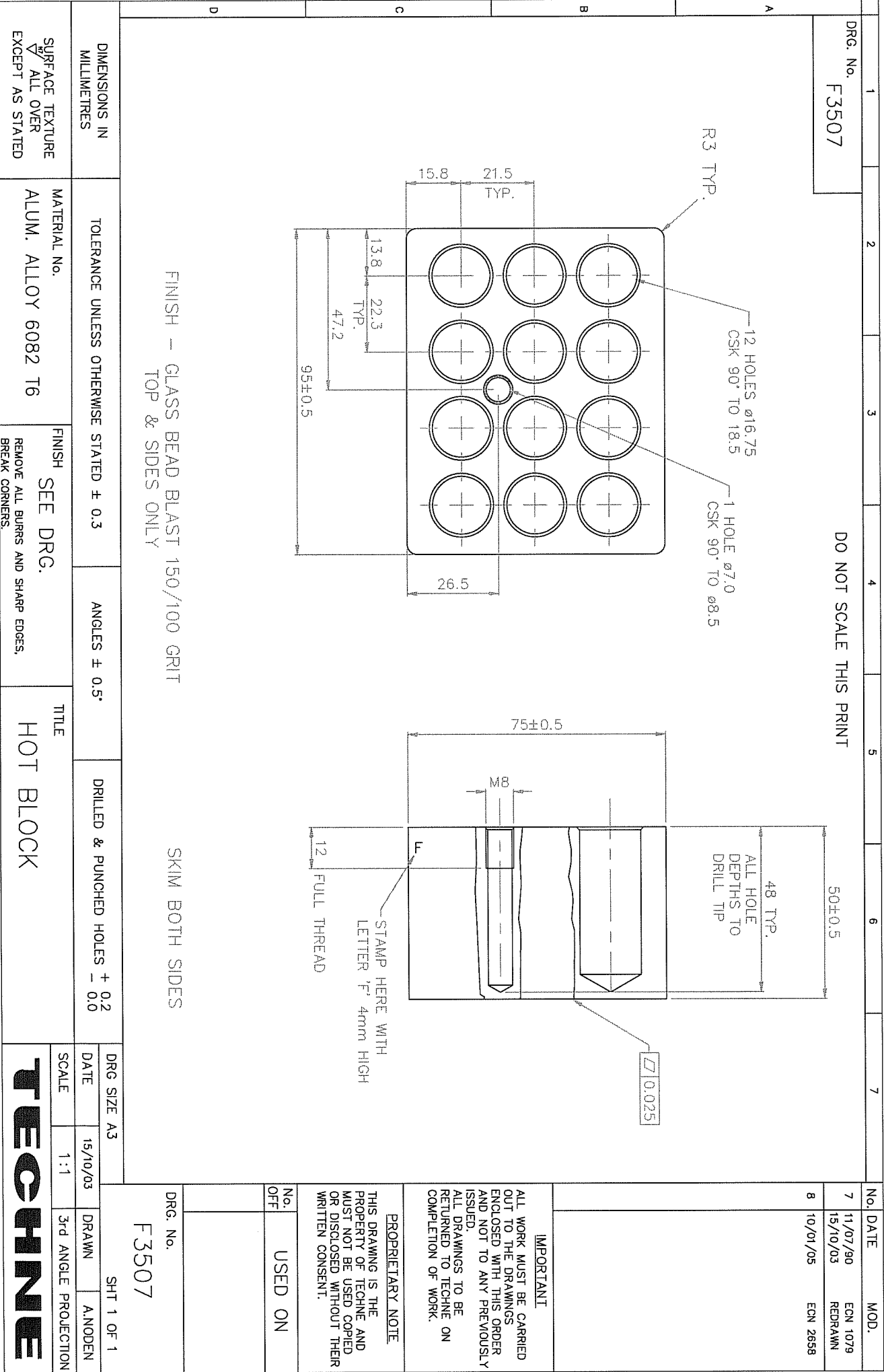
ALL WORK MUST BE CARRIED OUT TO THE DRAWINGS ENCLOSED WITH THIS ORDER AND NOT TO ANY PREVIOUSLY ISSUED.

ALL DRAWINGS TO BE RETURNED TO TECHNE ON COMPLETION OF WORK.

PROPRIETARY NOTE

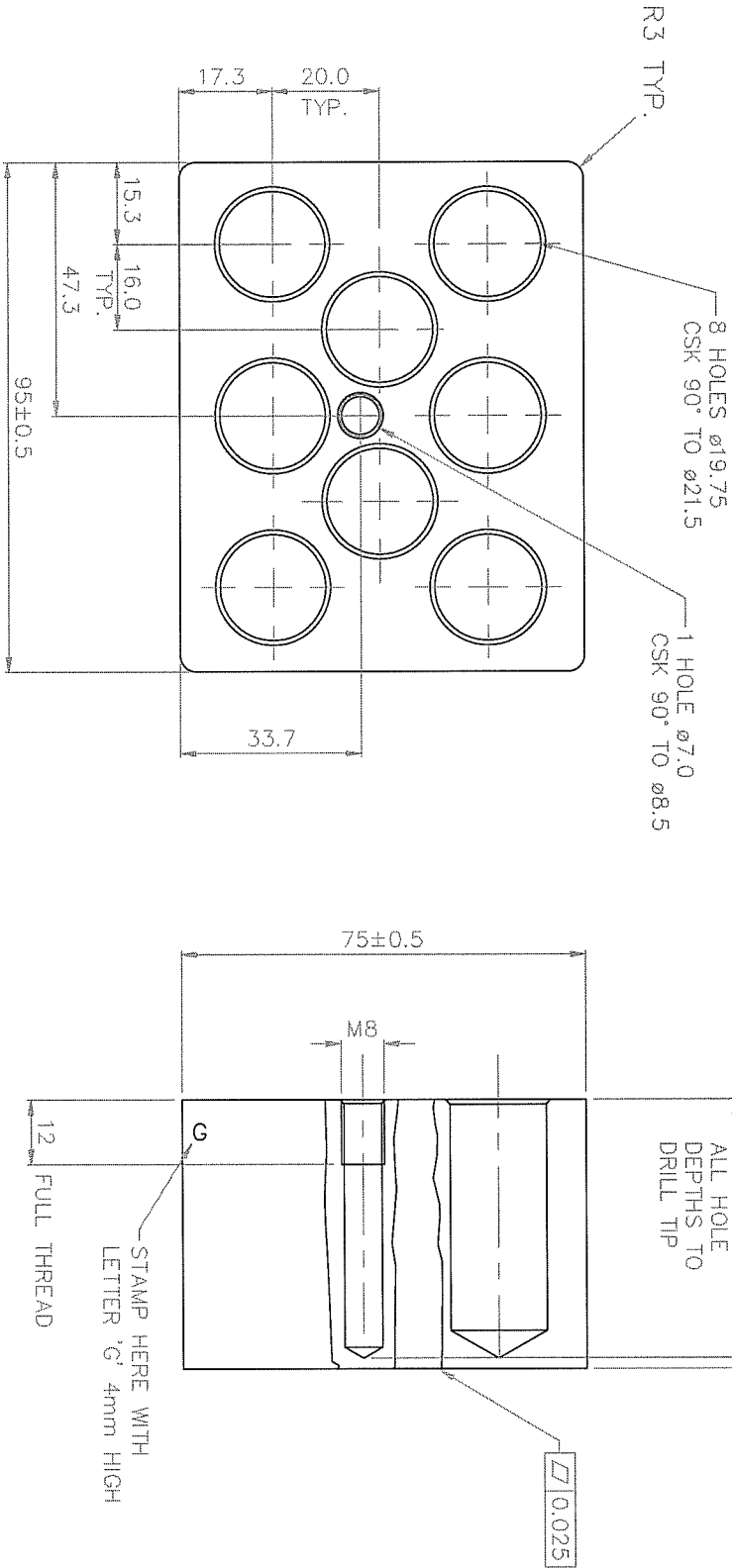
THIS DRAWING IS THE PROPERTY OF TECHNE AND MUST NOT BE USED COPIED OR DISCLOSED WITHOUT THEIR WRITTEN CONSENT.

No. USED ON
OFF



	1	2	3	4	5	6	7	No.	DATE	MOD.
DRG. No.	F3508							7	11/07/90 15/10/03	ECN 1079 REDRAWN
								8	10/01/05	ECN 2658

DO NOT SCALE THIS PRINT



FINISH – GLASS BEAD BLAST 150/100 GRIT
TOP & SIDES ONLY

SKIN BOTH SIDES

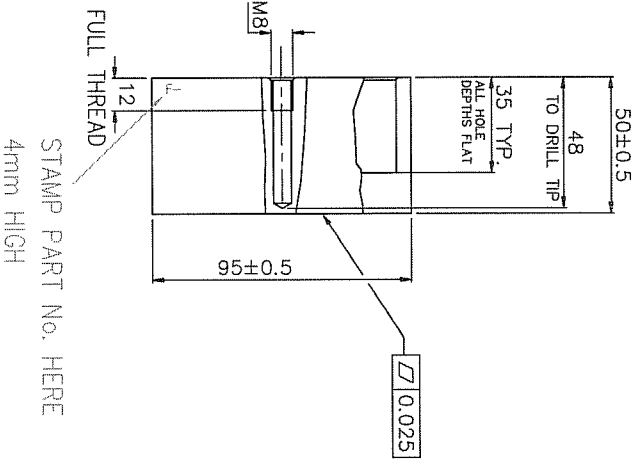
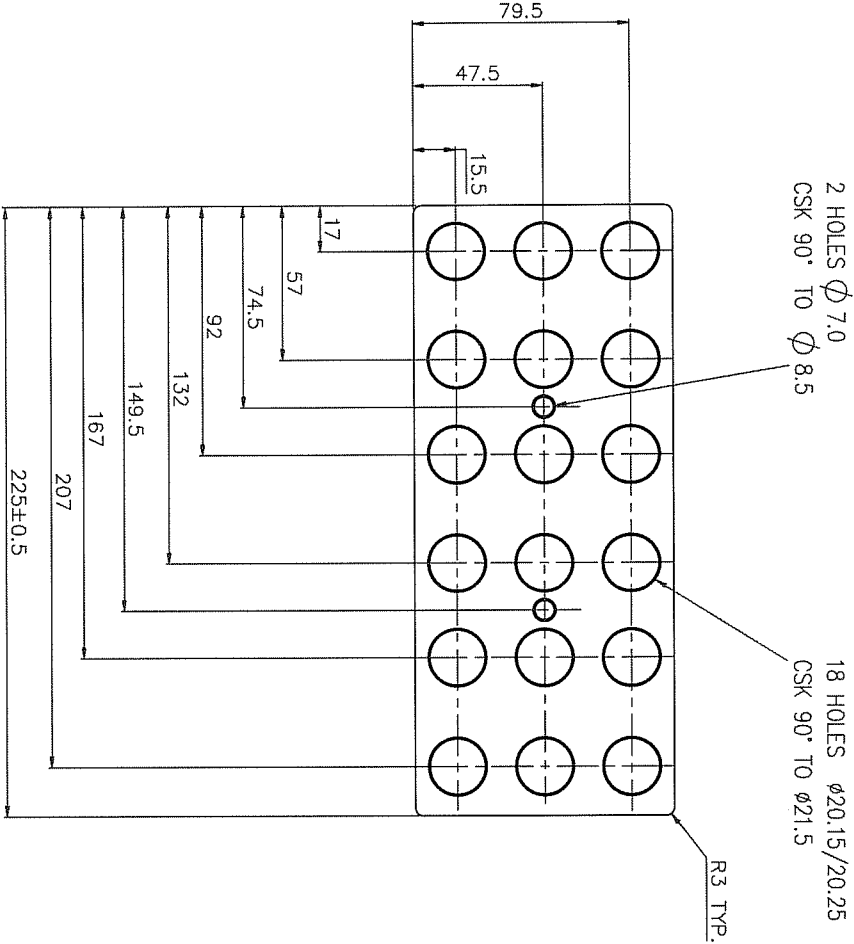
DIMENSIONS IN MILLIMETRES	TOLERANCE UNLESS OTHERWISE STATED ± 0.3	ANGLES ± 0.5°	DRILLED & PUNCHED HOLES + 0.2 - 0.0	DRG. No.	F3508	SHT 1 OF 1
SURFACE TEXTURE ✓ ALL OVER EXCEPT AS STATED	MATERIAL No. ALUM. ALLOY 6082 T6	FINISH SEE DRG. REMOVE ALL BURRS AND SHARP EDGES, BREAK CORNERS.	TITLE HOT BLOCK	DRG. SIZE A3	DATE 15/10/03	DRAWN A.NODEN
				SCALE 1:1		3rd ANGLE PROJECTION
TECHNE						

IMPORTANT
ALL WORK MUST BE CARRIED OUT TO THE DRAWINGS ENCLOSED WITH THIS ORDER AND NOT TO ANY PREVIOUSLY ISSUED.
ALL DRAWINGS TO BE RETURNED TO TECHNE ON COMPLETION OF WORK.

PROPRIETARY NOTE
THIS DRAWING IS THE PROPERTY OF TECHNE AND MUST NOT BE USED COPIED OR DISCLOSED WITHOUT THEIR WRITTEN CONSENT.

No. USED ON
OFF

DO NOT SCALE THIS PRINT



FINISH – GLASS BEAD BLAST 150/100 GRIT
TOP AND SIDES ONLY

SKIM BOTH SIDES

DIMENSIONS IN MILLIMETRES	TOLERANCE UNLESS OTHERWISE STATED	2 DECIMAL PLACES (e.g. 0.60) 1 DECIMAL PLACE (e.g. 0.6) ± 0.1 ± 0.2	FRACTIONS (e.g. 5 or 5 1/2) ± 0.4 ANGLES ± 30 MINS				
SURFACE TEXTURE ✓ ALL OVER EXCEPT AS STATED	MATERIAL No. ALUM ALLOY 6082 T6	FINISH SEE DRG. REMOVE ALL BURRS AND SHARP EDGES, BREAK CORNERS.	TITLE HOT BLOCK 18 x 20mm TUBES FLAT	DATE	15/09/03	DRAWN	A.NODEN
				DATE		CHECKED	
				SCALE	1:1	3rd ANGLE PROJECTION	
TECHNE							

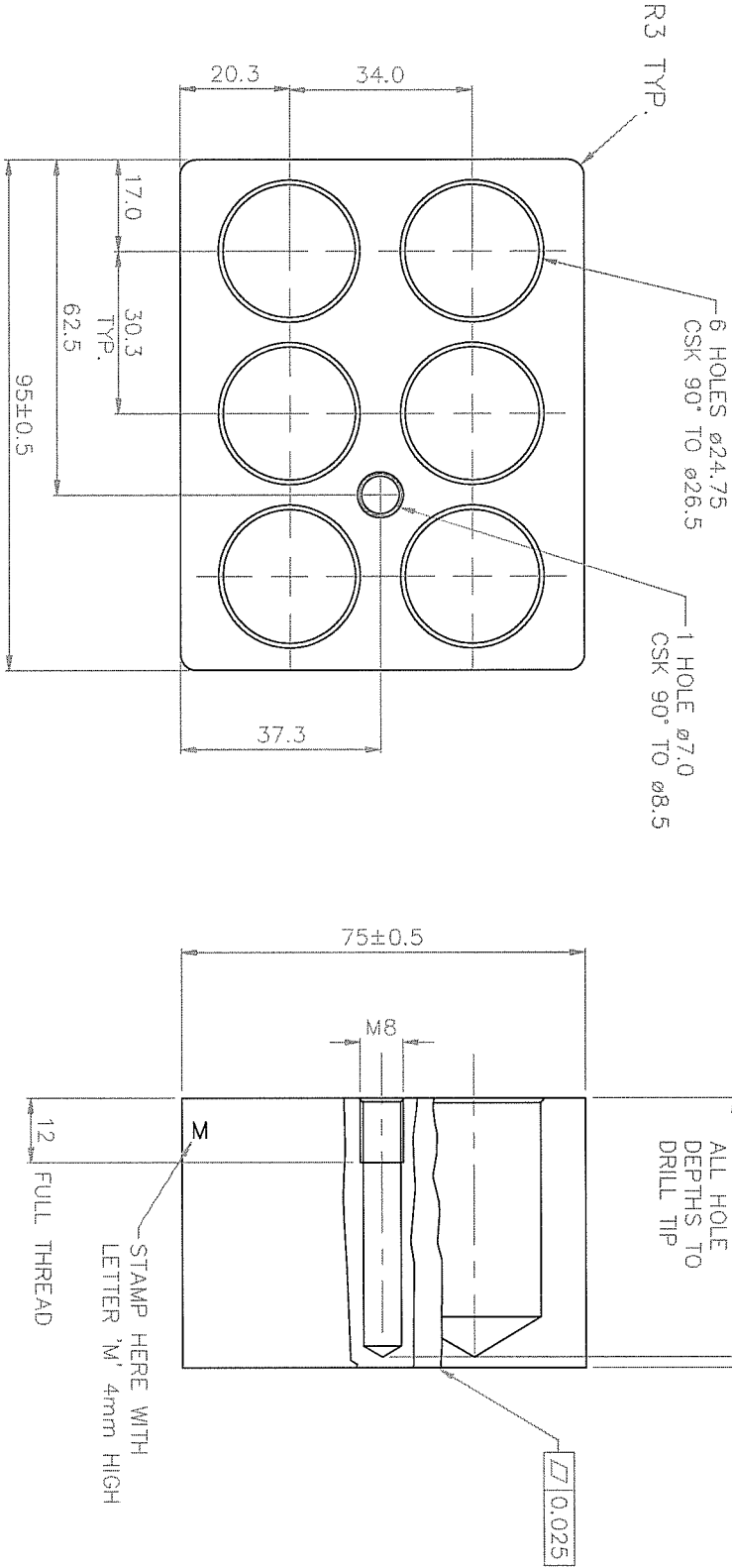
IMPORTANT
ALL WORK MUST BE CARRIED OUT TO THE DRAWINGS ENCLOSED WITH THIS ORDER AND NOT TO ANY PREVIOUSLY ISSUED .
ALL DRAWINGS TO BE RETURNED TO TECHNE (CAMBRIDGE) LTD. ON COMPLETION OF WORK.

PROPRIETARY NOTE
THIS DRAWING IS THE PROPERTY OF TECHNE (CAMBRIDGE) LTD AND MUST NOT BE USED COPIED OR DISCLOSED WITHOUT THEIR WRITTEN CONSENT.

No. USED ON
OFF

	1	2	3	4	5	6	7	No.	DATE	MOD.
DRG. No.	F4462							7	11/07/90 15/10/03	ECN 1079 REDRAWN
								8	10/01/05	ECN 2658

DO NOT SCALE THIS PRINT



FINISH — GLASS BEAD BLAST 150/100 GRIT
TOP & SIDES ONLY

SKIM ALL FACES

DIMENSIONS IN MILLIMETRES	TOLERANCE UNLESS OTHERWISE STATED ± 0.3	ANGLES ± 0.5°	DRILLED & PUNCHED HOLES + 0.2 - 0.0
------------------------------	---	---------------	--

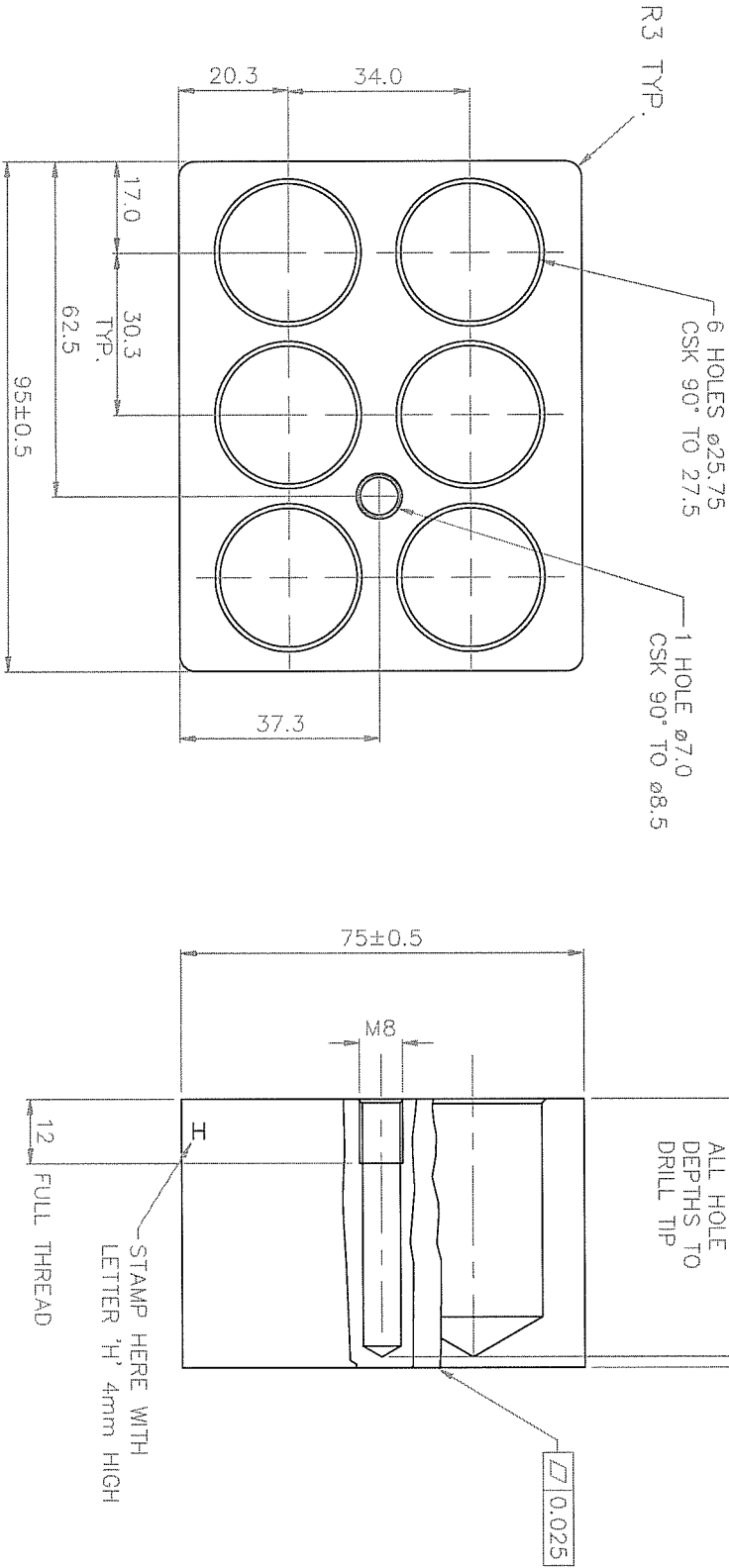
SURFACE TEXTURE ✓ ALL OVER EXCEPT AS STATED	MATERIAL No. ALUM. ALLOY 6082 T6	FINISH SEE DRG. REMOVE ALL BURRS AND SHARP EDGES, BREAK CORNERS.	TITLE HOT BLOCK	DRG. SIZE A3	DATE 21/10/03	DRAWN A.NODEN	3rd ANGLE PROJECTION
TECHNE							

DRG. No.	F4462
No. USED ON	OFF
PROPERTY NOTE THIS DRAWING IS THE PROPERTY OF TECHNE AND MUST NOT BE USED COPIED OR DISCLOSED WITHOUT THEIR WRITTEN CONSENT.	

IMPORTANT
ALL WORK MUST BE CARRIED
OUT TO THE DRAWINGS
ENCLOSED WITH THIS ORDER
AND NOT TO ANY PREVIOUSLY
ISSUED.
ALL DRAWINGS TO BE
RETURNED TO TECHNE ON
COMPLETION OF WORK.

	1	2	3	4	5	6	7	No.	DATE	MOD.
DRG. No.	F3509							7	11/07/90	ECN 1079
								15/10/03	REDRAWN	
								8	10/01/05	ECN 2658

DO NOT SCALE THIS PRINT



FINISH – GLASS BEAD BLAST 150/100 GRIT
TOP & SIDES ONLY

SKIM ALL FACES

DIMENSIONS IN MILLIMETRES		TOLERANCE UNLESS OTHERWISE STATED ± 0.3		ANGLES ± 0.5°		DRILLED & PUNCHED HOLES + 0.2 - 0.0		DRG SIZE A3		SHT 1 OF 1	
SURFACE TEXTURE ✓ ALL OVER EXCEPT AS STATED		MATERIAL No. ALUM. ALLOY 6082 T6		FINISH SEE DRG. REMOVE ALL BURRS AND SHARP EDGES, BREAK CORNERS.		TITLE HOT BLOCK		DATE 15/10/03		DRAWN A.NODEN	
						SCALE 1:1		3rd ANGLE PROJECTION			
TECHNE											

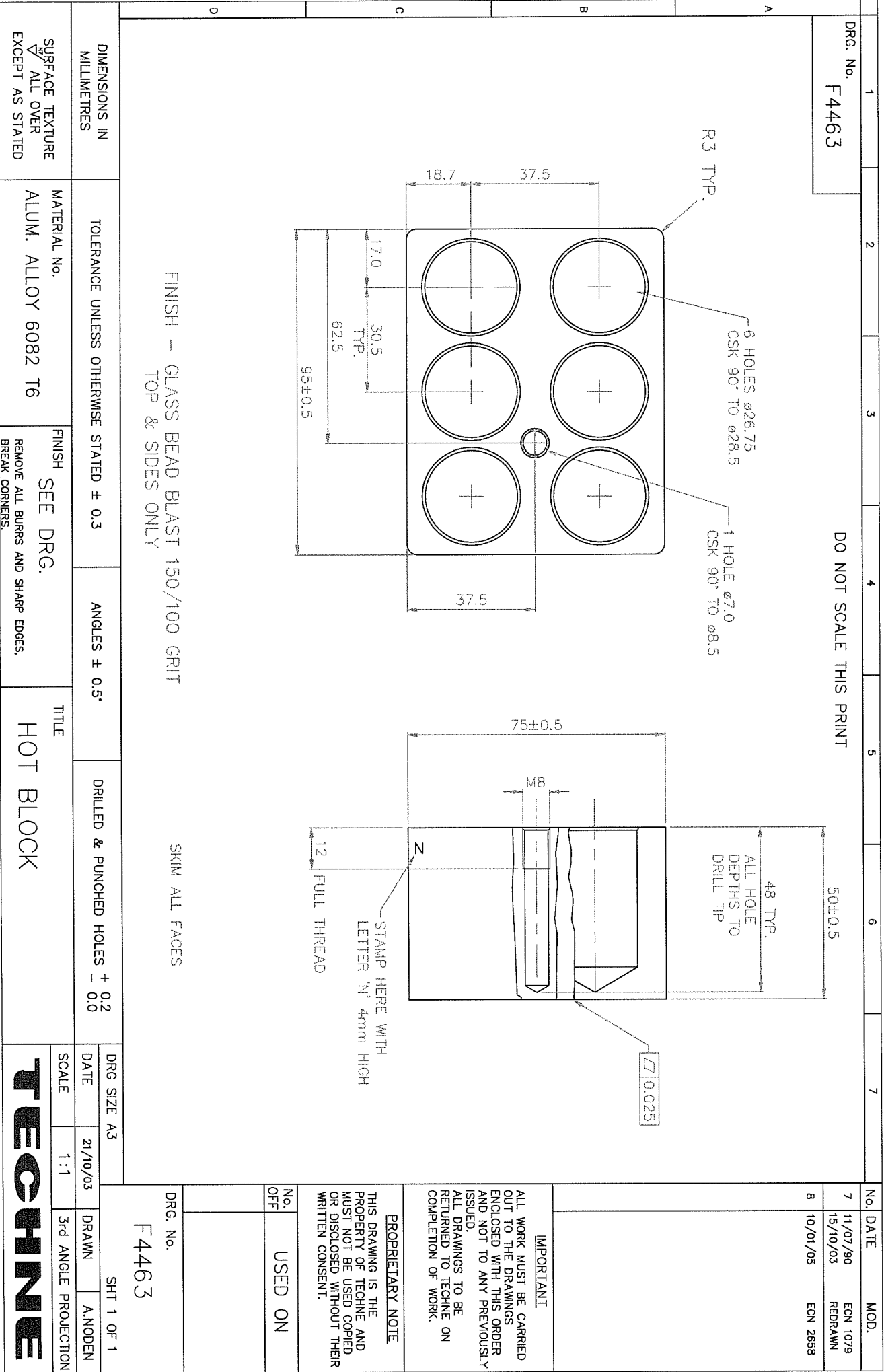
IMPORTANT

ALL WORK MUST BE CARRIED OUT TO THE DRAWINGS ENCLOSED WITH THIS ORDER AND NOT TO ANY PREVIOUSLY ISSUED. ALL DRAWINGS TO BE RETURNED TO TECHNE ON COMPLETION OF WORK.

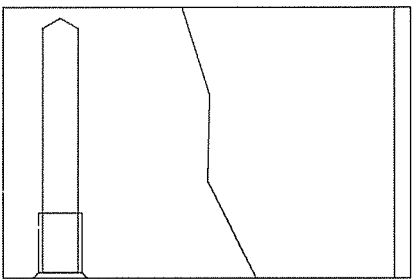
PROPRIETARY NOTE

THIS DRAWING IS THE PROPERTY OF TECHNE AND MUST NOT BE USED COPIED OR DISCLOSED WITHOUT THEIR WRITTEN CONSENT.

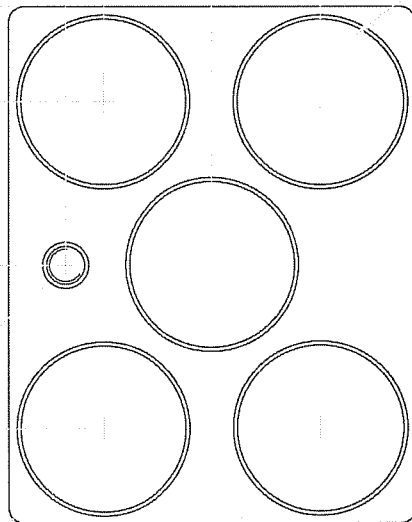
No. USED ON
OFF



No.	DATE	MOD.
1	21/11/00	ECN 2050
2	07/01/05	ECN 2658

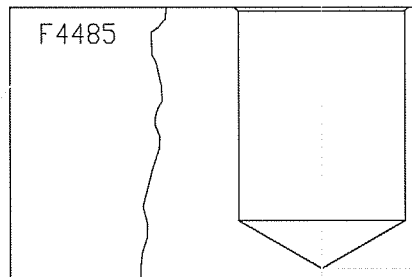


5 HOLE $\phi 30.5^{+0.3}_{-0.0}$
CSK 90° TO $\phi 32.0$



95.0±0.5

77.75



48 (TP)

70.0±0.5

ALL HOLES TO MILL TO

F4485

IMPORTANT

ALL WORK MUST BE CARRIED OUT TO THE DRAWINGS ENCLOSED WITH THIS ORDER AND NOT TO ANY PREVIOUSLY ISSUED . ALL DRAWINGS TO BE RETURNED TO TECHNE (CAMBRIDGE) LTD. ON COMPLETION OF WORK.

PROPRIETARY NOTE

THIS DRAWING IS THE PROPERTY OF TECHNE (CAMBRIDGE) LTD AND MUST NOT BE USED COPIED OR DISCLOSED WITHOUT THEIR WRITTEN CONSENT.

No. USED ON
OFF

DRG. No.

F4485

DRG. ALL PARTS

DIMENSIONS IN MILLIMETRES

TOLERANCE UNLESS OTHERWISE STATED

2 DECIMAL PLACES (e.g. 0.60) ± 0.1
1 DECIMAL PLACE (e.g. 0.6) ± 0.2

FRACTIONS (e.g. 5 or 5 1/2) ± 0.4
ANGLES ± 30 MINS

SURFACE TEXTURE
✓ ALL OVER
EXCEPT AS STATED

MATERIAL No.
ALUM. ALLOY 6082 T6

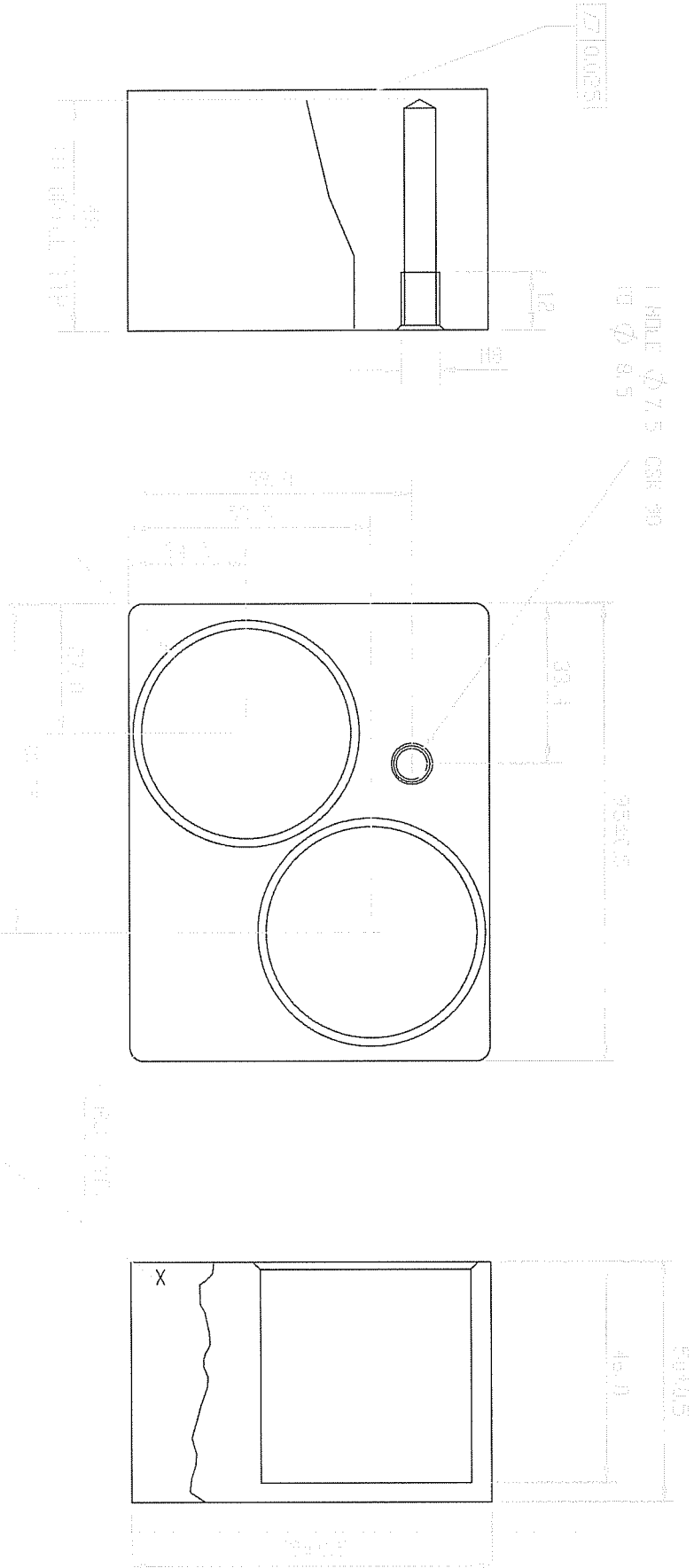
FINISH
BLACK ANODISE
REMOVE ALL BURRS AND SHARP EDGES,
BREAK CORNERS.

TITLE
INSERT BLOCK 5 × 30mm TUBES

TECHNE (CAMBRIDGE) LTD.

DATE	21/11/00	DRAWN	A.NODEN
DATE		CHECKED	
SCALE	1:1	3rd ANGLE PROJECTION	

DO NOT SCALE THIS PRINT



No.	DATE	MULT.
A	01. 02. 01.	
1	15/02/01	ECN 2083
2	07/02/02	ECN 2212
	28/10/03	
	20/02/04	ECN 2526
3	07/01/05	ECN 2658
4	08/08/05	ECN42/05

IMPORTANT

ALL WORK MUST BE CARRIED OUT TO THE DRAWINGS ENCLOSED WITH THIS ORDER AND NOT TO ANY PREVIOUSLY ISSUED . ALL DRAWINGS TO BE RETURNED TO TECHNE (CAMBRIDGE) LTD. ON COMPLETION OF WORK.

PROPRIETARY NOTE

THIS DRAWING IS THE PROPERTY OF TECHNE (CAMBRIDGE) LTD AND MUST NOT BE USED COPIED OR DISCLOSED WITHOUT THEIR WRITTEN CONSENT.

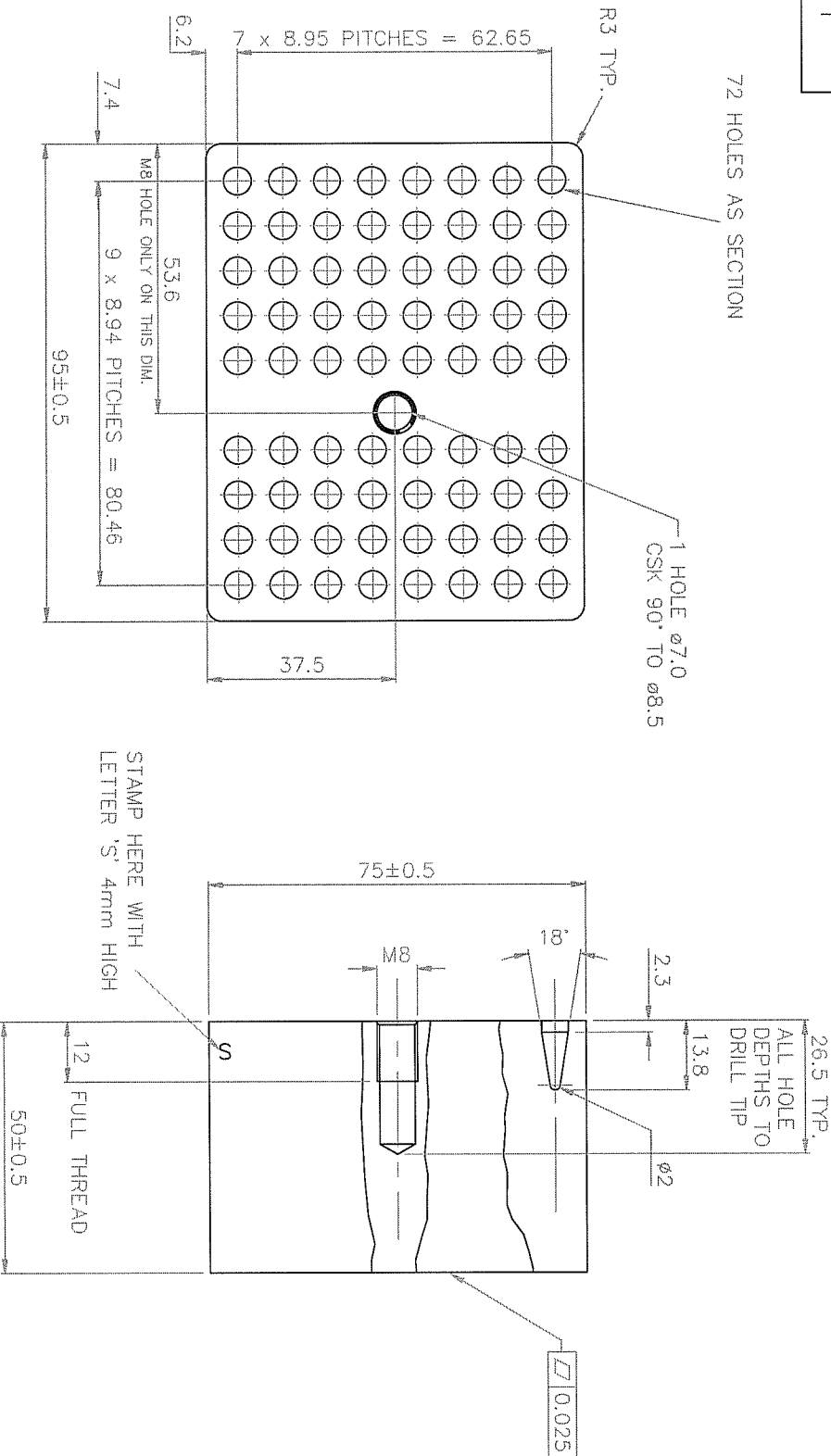
No. USED ON
OFF

DRG. No. F4487

DIMENSIONS IN MILLIMETRES	TOLERANCE UNLESS OTHERWISE STATED	2 DECIMAL PLACES (e.g. 0.60) ± 0.1	FRACTIONS (e.g. 5 or 5 1/2) ± 0.4		
		1 DECIMAL PLACE (e.g. 0.6) ± 0.2	ANGLES ± 30 MINS		
SURFACE TEXTURE ✓ ALL OVER EXCEPT AS STATED	MATERIAL No. ALUM ALLOY 6082 T6	FINISH GLASS BEAD BLAST 150/100 GRIT TOP AND SIDES ONLY REMOVE ALL BURRS AND SHARP EDGES, BREAK CORNERS.	TITLE HOT BLOCK LIPDSOME		
			TECHNE (CAMBRIDGE) LTD.		
		DATE	24/7/97	DRAWN	A.NODEN
		DATE		CHECKED	
		SCALE	1: 1	3rd ANGLE PROJECTION	

1	2	3	4	5	6	7	No.	DATE	MOD.
DRG. No. F4471							1	14/07/95	ECN 1585
								22/10/03	REDRAWN
								17/02/04	ECN 2518
							2	10/01/05	ECN 2658

DO NOT SCALE THIS PRINT



FINISH — GLASS BEAD BLAST 150/100 GRIT
TOP & SIDES ONLY

SKIM ALL FACES

DIMENSIONS IN
MILLIMETRES

TOLERANCE UNLESS OTHERWISE STATED ± 0.3

ANGLES ± 0.5°

DRILLED & PUNCHED HOLES + 0.2
- 0.0

DRG. SIZE A3

SHT 1 OF 1

DRG. No.
F4471

PROPRIETARY NOTE
THIS DRAWING IS THE
PROPERTY OF TECHNE AND
MUST NOT BE USED COPIED
OR DISCLOSED WITHOUT THEIR
WRITTEN CONSENT.

IMPORTANT
ALL WORK MUST BE CARRIED
OUT TO THE DRAWINGS
ENCLOSED WITH THIS ORDER
AND NOT TO ANY PREVIOUSLY
ISSUED.
ALL DRAWINGS TO BE
RETURNED TO TECHNE ON
COMPLETION OF WORK.

No.
OFF
USED ON

FINISH

SEE DRG.

REMOVE ALL BURRS AND SHARP EDGES,
BREAK CORNERS.

TITLE

INSERT BLOCK 0.2mI

SURFACE TEXTURE
✓ ALL OVER
EXCEPT AS STATED

MATERIAL No.

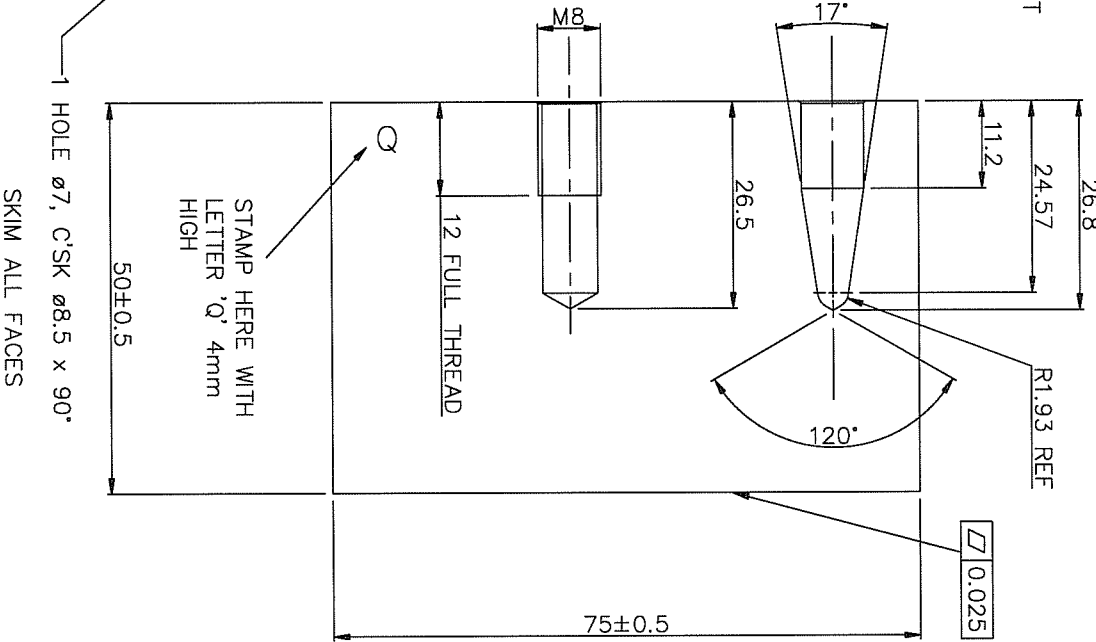
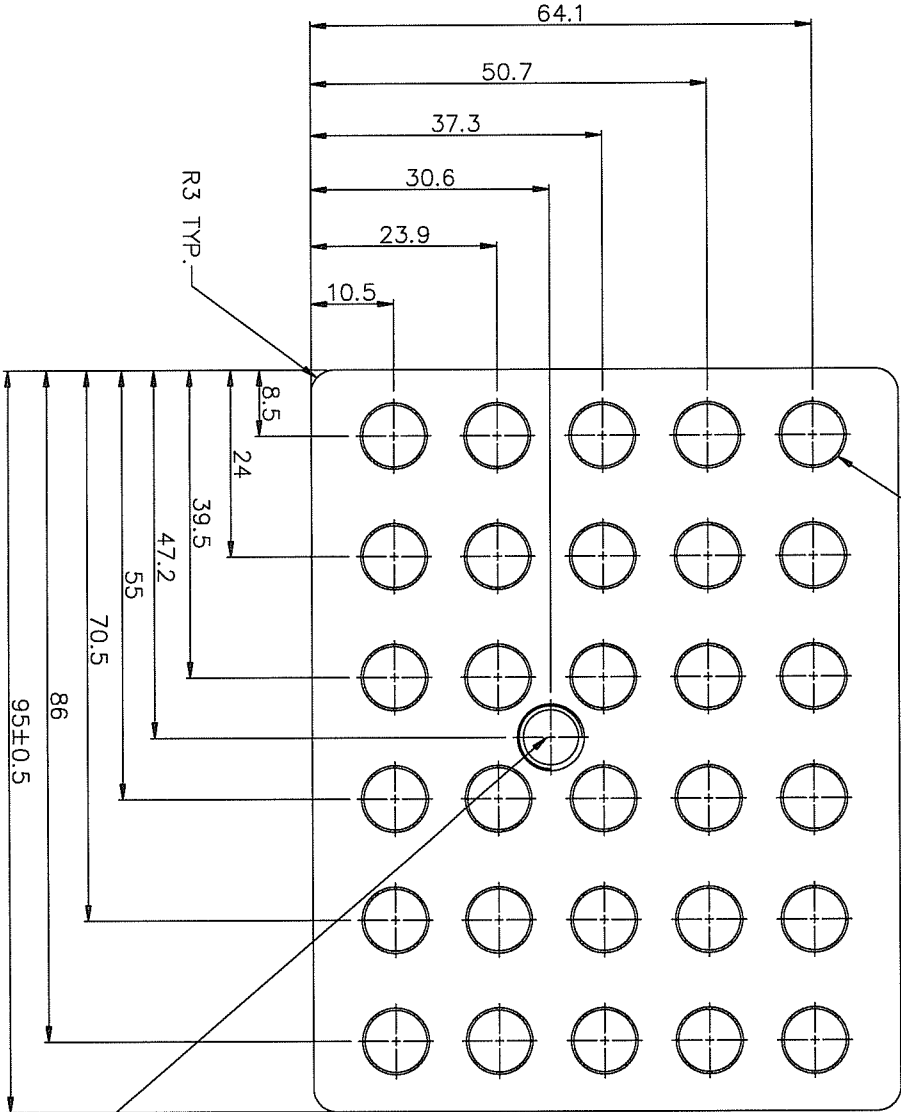
ALUM. ALLOY 6082 T6

SCALE 1:1 3rd ANGLE PROJECTION

DATE 22/10/03 DRAWN A.NODEN

TECHNE

30 HOLES $\varnothing 7.9$ CSK $\varnothing 8.5 \times 90^\circ$
FINISH – GLASS BEAD BLAST 150/100 GRIT
TOP & SIDES ONLY.



DIMENSIONS IN MILLIMETRES	TOLERANCE UNLESS OTHERWISE STATED ± 0.3	ANGLES $\pm 0.5^\circ$	DRILLED & PUNCHED HOLES ± 0.2
SURFACE TEXTURE \sqrt{R} ALL OVER EXCEPT AS STATED	MATERIAL No. ALUM ALLOY 6082 T6	FINISH SEE DRG. REMOVE ALL BURRS AND SHARP EDGES, BREAK CORNERS.	TITLE INSERT BLOCK 30x0.5ml

DRG. SIZE A4	DATE 02/10/03	SCALE 1:1
SHT 1 OF 1		
TECHNE		

DRG. No.
F4465

No. USED ON
OFF DB SERIES

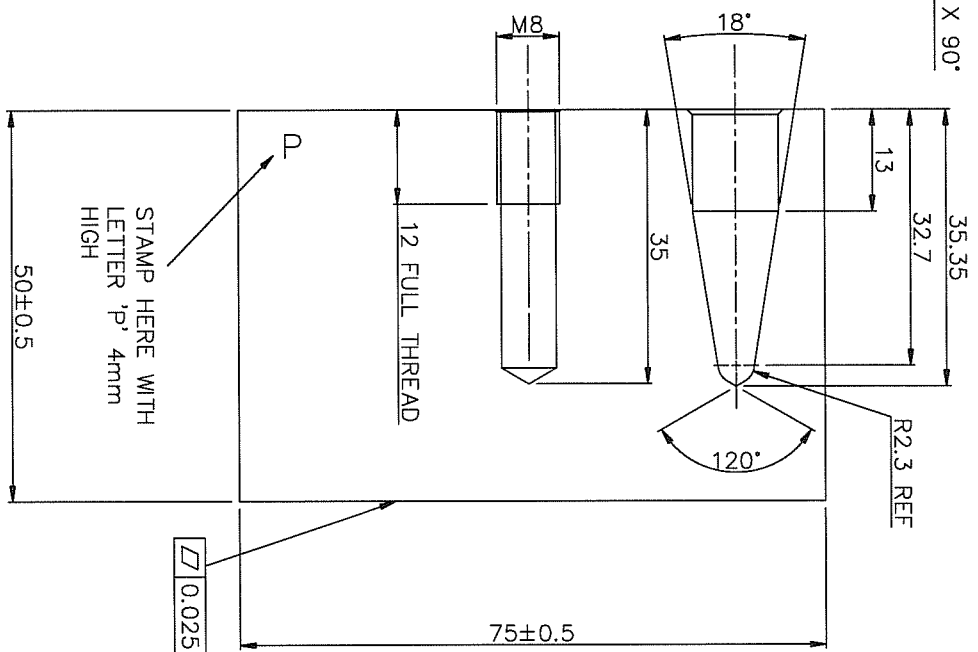
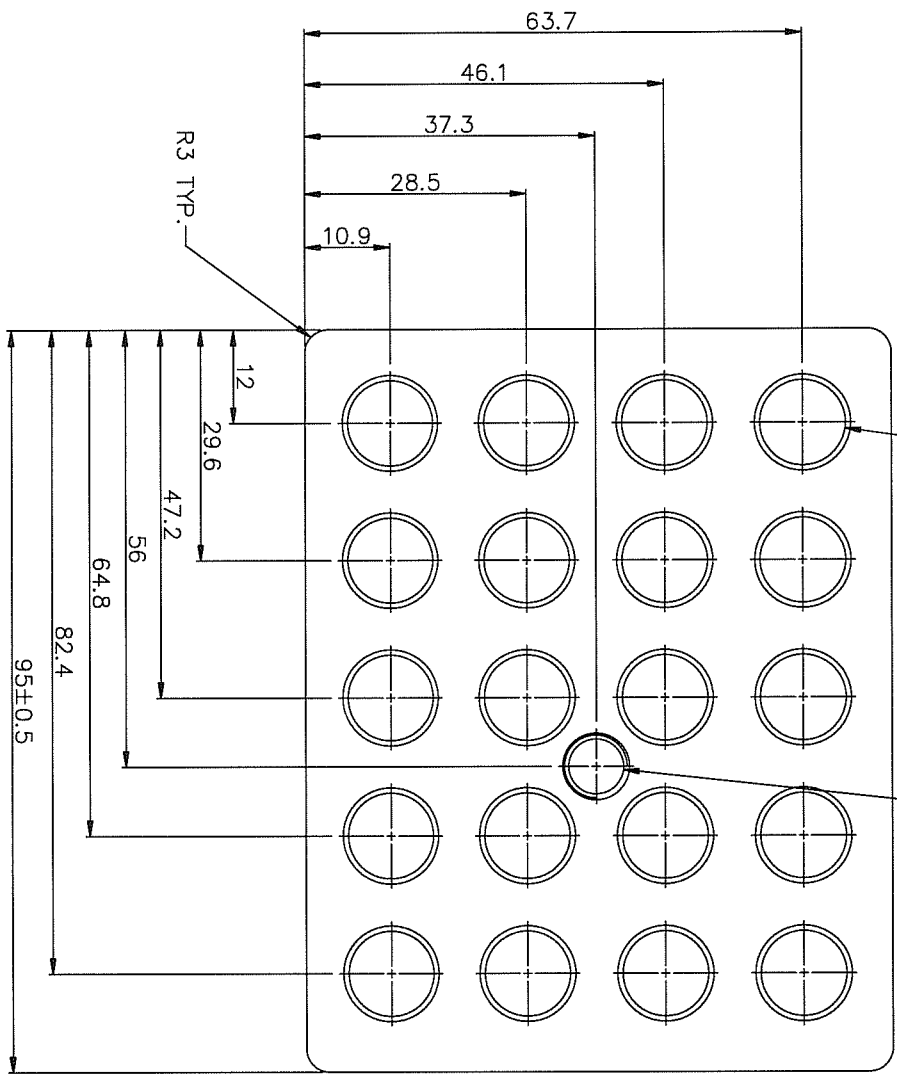
PROPRIETARY NOTE
THIS DRAWING IS THE PROPERTY OF
TECHNE AND MUST NOT BE USED
COPIED OR DISCLOSED WITHOUT
THEIR WRITTEN CONSENT.

IMPORTANT
ALL WORK MUST BE CARRIED OUT
TO THE DRAWINGS ENCLOSED WITH
THIS ORDER AND NOT TO ANY
PREVIOUSLY ISSUED.
ALL DRAWINGS TO BE RETURNED TO
ON COMPLETION OF WORK.

No.	DATE	MOD.
2	11/07/90	ECN 1079
3	03/10/03	ECN 2447
4	07/12/04	ECN 2654
5	06/01/05	ECN 2658
6	08/08/05	ECN 45/05

DRG. No.
F4464

DO NOT SCALE THIS PRINT
20 HOLES $\phi 10.9$, C'SK $\phi 12.25 \times 90^\circ$
1 HOLE $\phi 7$, C'SK $\phi 8.5 \times 90^\circ$



FINISH - GLASS BEAD BLAST 150/100 GRIT
TOP & SIDES ONLY.

DIMENSIONS IN
MILLIMETRES

TOLERANCE UNLESS OTHERWISE STATED ± 0.3

ANGLES $\pm 0.5^\circ$

DRILLED & PUNCHED HOLES ± 0.2

DRG. SIZE A4
DATE 02/10/03
SCALE 1:1

SHT 1 OF 1
DRAWN D.L.J.
3rd ANGLE PROJECTION

SURFACE TEXTURE
 \sqrt{R} ALL OVER
EXCEPT AS STATED

MATERIAL No.
ALUM. ALLOY 6082 T6

FINISH
SEE DRG.
REMOVE ALL BURRS AND SHARP EDGES,
BREAK CORNERS.

TITLE
INSERT BLOCK 20x1.5ml

TECHNE

No.	DATE	MOD.
8	11/07/90	ECN 1079
REDRAWN		
9	03/10/03	ECN 2447
15/10/03		
10	07/12/04	ECN 2654
11	06/01/05	ECN 2658
12	08/08/05	ECN 45/05

IMPORTANT
ALL WORK MUST BE CARRIED OUT
TO THE STANDARDS ENCLOSED WITH
THIS DRAWING AND NOT TO ANY
PREVIOUSLY ISSUED
ALL DRAWINGS TO BE RETURNED TO
ON COMPLETION OF WORK.

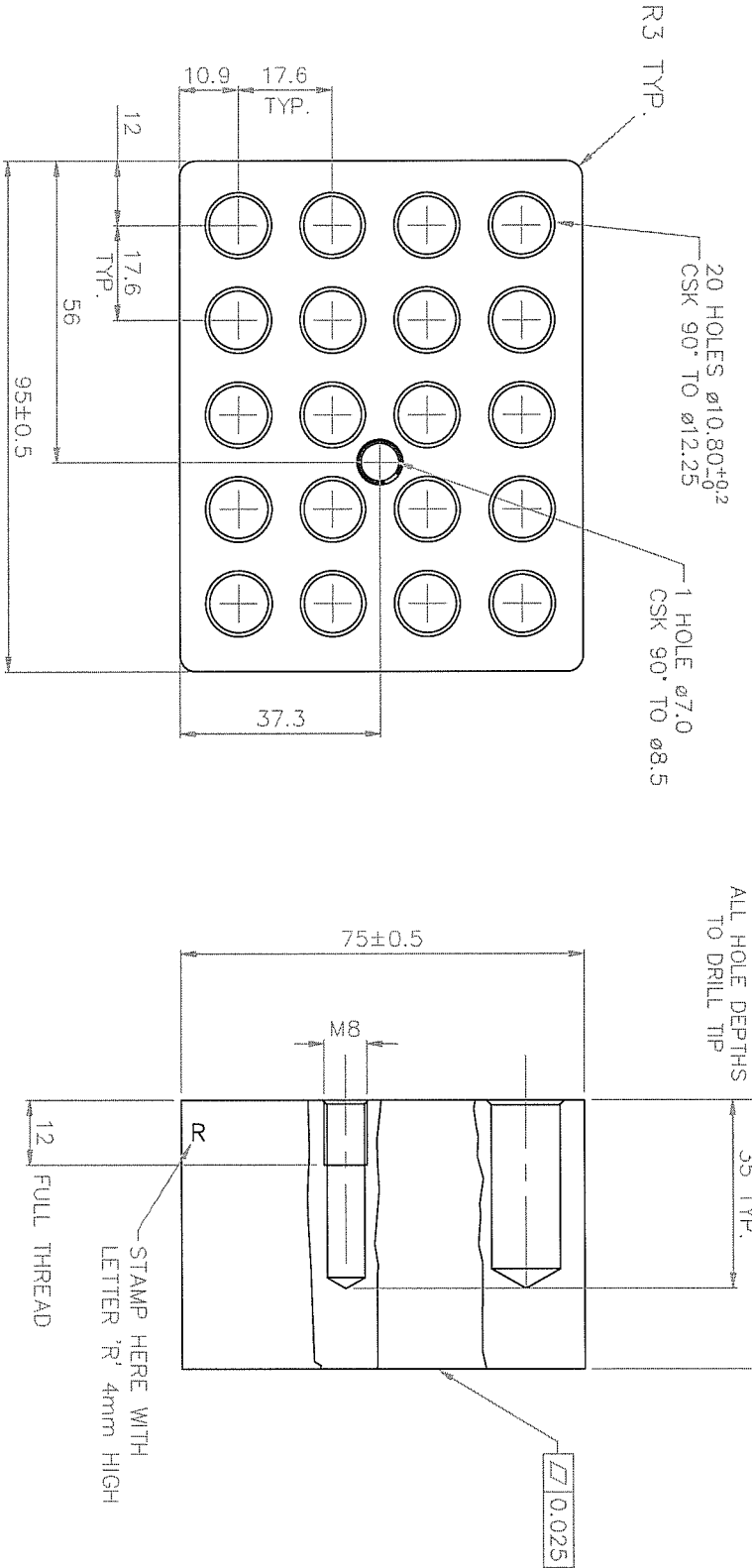
PROPRIETARY NOTE
THIS DRAWING IS THE PROPERTY OF
TECHNE AND MUST NOT BE USED
COPIED OR DISCLOSED WITHOUT
THEIR WRITTEN CONSENT.

No.	USED ON
OFF	DB SERIES

DRG. No.
F4464

	1	2	3	4	5	6	7	No.	DATE	MOD.
DRG. No.	F4470							1	11/12/92	ECN 1303
								2	10/01/05	ECN 2658
									21/10/03	REDRAWN

DO NOT SCALE THIS PRINT



FINISH – GLASS BEAD BLAST 150/100 GRIT
TOP & SIDES ONLY

SKIM ALL FACES

DIMENSIONS IN
MILLIMETRES

TOLERANCE UNLESS OTHERWISE STATED ± 0.3

ANGLES $\pm 0.5^\circ$

DRILLED & PUNCHED HOLES $+ 0.2$
 $- 0.0$

DRG SIZE A3

SHT 1 OF 1

SURFACE TEXTURE
ALL OVER
EXCEPT AS STATED

MATERIAL No.

ALUM. ALLOY 6082 T6

FINISH

SEE DRG.

REMOVE ALL BURRS AND SHARP EDGES,
BREAK CORNERS.

TITLE

HOT BLOCK

DATE 21/10/03

SCALE

1:1

DRAWN A.NODEN

3rd ANGLE PROJECTION

DRG. No.

F4470

PROPRIETARY NOTE

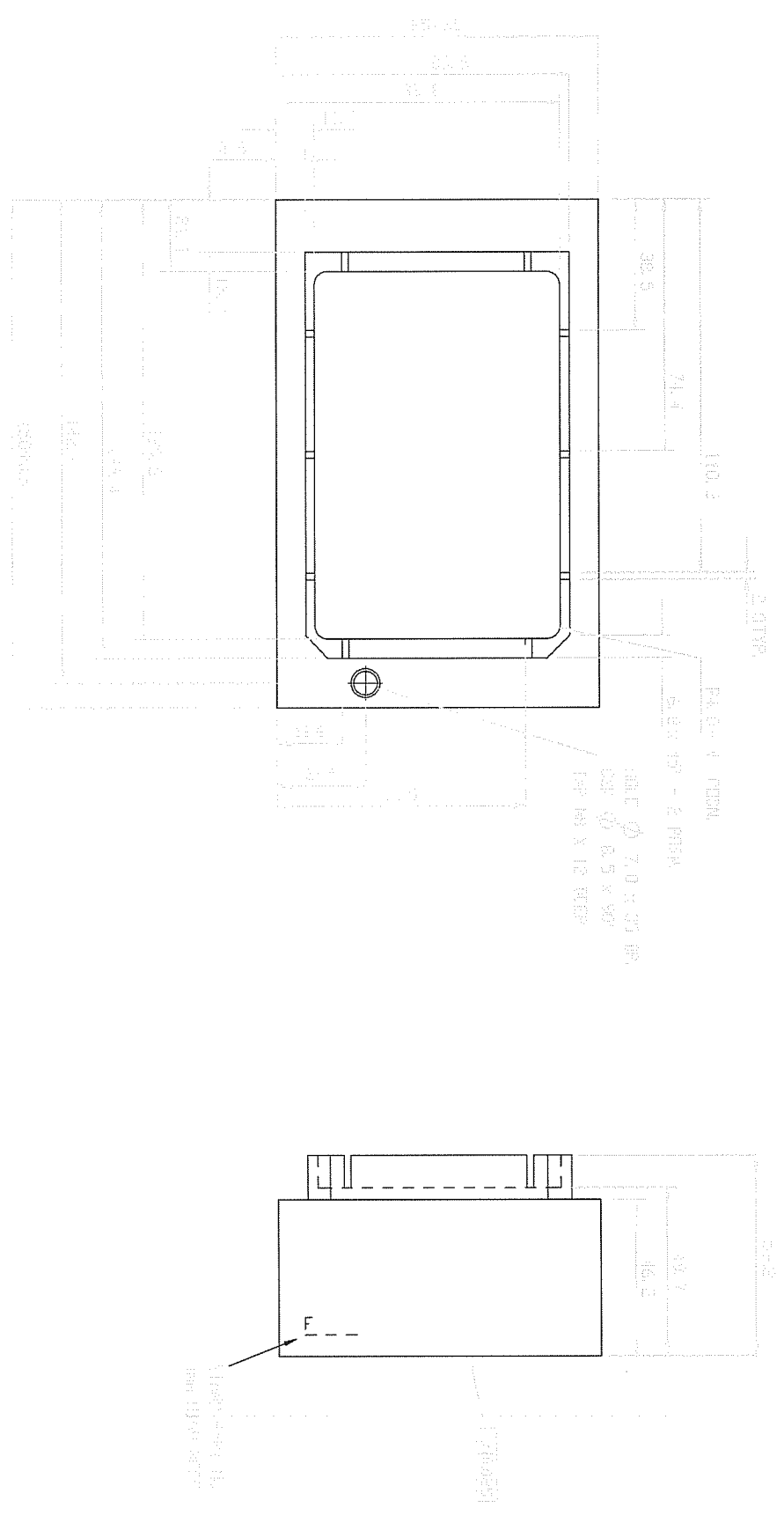
THIS DRAWING IS THE
PROPERTY OF TECHNE AND
MUST NOT BE USED COPIED
OR DISCLOSED WITHOUT THEIR
WRITTEN CONSENT.

No.
OFF USED ON



IMPORTANT

ALL WORK MUST BE CARRIED
OUT TO THE DRAWINGS
ENCLOSED WITH THIS ORDER
AND NOT TO ANY PREVIOUSLY
ISSUED.
ALL DRAWINGS TO BE
RETURNED TO TECHNE ON
COMPLETION OF WORK.

TECHNE



DD NOT SCALE THIS PRINT

DO NOT SCALE THIS PRINT		DIMENSIONS IN MILLIMETRES		TOLERANCES UNLESS OTHERWISE STATED.		2 DECIMAL PLACES (e.g. 0.60) ±0.1		1 DECIMAL PLACE (e.g. 0.6) ±0.2		FRACTIONS (e.g. 5 DR 5 1/2) ±0.4		ANGLES ±30 MINUTES		MACHINED DIAMETERS TO BE CONCENTRIC TO WITHIN 0.1 F.T.M.		DRILLED AND PUNCHED HOLES 40.00 TO 40.05 DIA 41.00 TO 41.05 DIA 42.00 TO 42.05 DIA		DATE		29/11/99		DRAWN		R. W.			
SURFACE TEXTURE UNLESS OTHERWISE STATED.		 ALL OVER		PROJECTION THIRD ANGLE.				MATERIAL No.		ALUMINIUM ALLOY 6082 T6		FINISH		REMOVE ALL BURRS, SHARP EDGES & BREAK CORNERS GLASS BEAD BLAST 150/100 GRIT TOP AND SIDES ONLY		TITLE		BLOCK 96 WELL ORANGE		SCALE		1:1		3RD ANGLE PROJ.		CHECKED	

DRG No. F4481

PROPRIETARY NOTE
THIS DRAWING IS THE
PROPERTY OF TECHNE
(CAMBRIDGE) LTD.
AND MUST NOT BE USED,
COPIED OR DISCLOSED
WITHOUT THEIR WRITTEN
CONSENT.

No. OFF. USED IN
1 FDBOIM-
(ACCESSORY)

1		2		3		4		5		6		7					
DRG. No. F3501												No.		DATE		MOD.	
DO NOT SCALE THIS PRINT												6		10/03/86		REDRAWN	
												7		10/01/05		ECN 2658	
<div><div>A</div><div>B</div><div>C</div><div>D</div></div> <div><div><div><div><div></div><div>0.025</div></div><div></div></div><div><div><div></div><div>0.025</div></div><div></div></div></div><div><div><div></div><div>50±0.5</div></div><div></div></div><div><div><div></div><div>75±0.5</div></div><div></div></div><div><div><div></div><div>95±0.5</div></div><div></div></div><div><div><div></div><div>R3 TYP.</div></div></div></div> <div><div>FINISH – GLASS BEAD BLAST 150/100 GRIT</div><div>SKIM ALL FACES</div><div>TOP & SIDES ONLY</div></div>																	

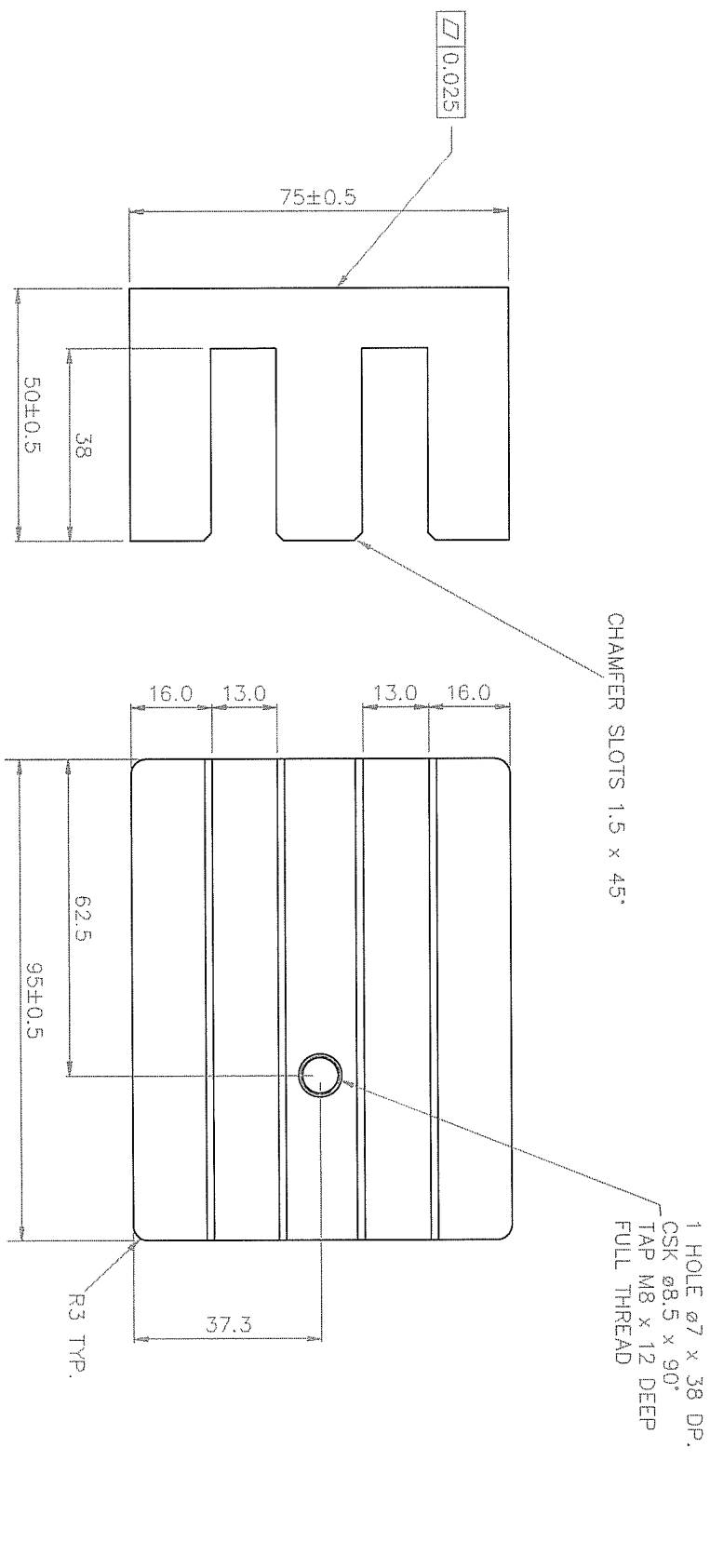
1		2		3		4		5		6		7						
DRG. No. F4460		DO NOT SCALE THIS PRINT										No.	DATE	MOD.				
												7	19/07/90 15/10/03	ECN 1079 REDRAWN				
												8	10/01/05	ECN 2658				
<div>STAMP HERE WITH LETTER 'K' 4mm HIGH</div> <div>NOTE - HOLE TO DRILL TIP</div> <div>1 HOLE $\varnothing 7 \times 48$ DP. CSK $\varnothing 8.5 \times 90^\circ$ TAP M8 x 12 DEEP FULL THREAD</div> <div>R3 TYP.</div> <div>75\pm0.5</div> <div>50\pm0.5</div> <div>26.5</div> <div>25.75</div> <div>95\pm0.5</div> <div>0.025</div> <div>A</div> <div>B</div> <div>C</div> <div>D</div>																		
DIMENSIONS IN MILLIMETRES		TOLERANCE UNLESS OTHERWISE STATED ± 0.3		ANGLES $\pm 0.5^\circ$		DRILLED & PUNCHED HOLES $+ 0.2$ $- 0.0$		DRG. SIZE A3		DATE			15/10/03		DRAWN		ANODEN	
SURFACE TEXTURE $\sqrt{\text{R}}$ ALL OVER EXCEPT AS STATED		MATERIAL No. ALUM. ALLOY 6082 T6		FINISH SEE DRG. REMOVE ALL BURRS AND SHARP EDGES, BREAK CORNERS.		TITLE HOT BLOCK		SCALE			1 : 1		3rd ANGLE PROJECTION					
FINISH - GLASS BEAD BLAST 150/100 GRIT TOP & SIDES ONLY SKIM ALL FACES													DRG. No. F4460			SHT 1 OF 1		
PROPRIETARY NOTE THIS DRAWING IS THE PROPERTY OF TECHNE AND MUST NOT BE USED COPIED OR DISCLOSED WITHOUT THEIR WRITTEN CONSENT.													No. OFF			USED ON		
IMPORTANT ALL WORK MUST BE CARRIED OUT TO THE DRAWINGS ENCLOSED WITH THIS ORDER AND NOT TO ANY PREVIOUSLY ISSUED. ALL DRAWINGS TO BE RETURNED TO TECHNE ON COMPLETION OF WORK.																		
TECHNE																		

1		2		3		4		5		6		7		
DRG. No. F3512		DO NOT SCALE THIS PRINT										No.	DATE	MOD.
<div><div><div>STAMP HERE WITH LETTER 'J' 3mm HIGH</div><div><div><div><div>95±0.5</div><div>50±0.5</div><div>0.025</div></div><div><div>25</div><div>25</div><div>1 HOLE ø7 x 48 DP. CSK ø8.5 x 90° TAP M8 x 12 DEEP FULL THREAD</div><div>R3 TYP.</div></div><div>225±0.5</div></div></div><div>FINISH – GLASS BEAD BLAST 150/100 GRIT TOP & SIDES ONLY</div><div>SKIM ALL FACES</div></div></div>												7	19/07/90 15/10/03	ECN 1079 REDRAWN
												8	10/01/05	ECN 2658
<div><div><div><div><div>ALL WORK MUST BE CARRIED OUT TO THE DRAWINGS ENCLOSED WITH THIS ORDER AND NOT TO ANY PREVIOUSLY ISSUED.</div><div>ALL DRAWINGS TO BE RETURNED TO TECHNE ON COMPLETION OF WORK.</div></div></div><div>IMPORTANT</div></div></div> <div><div>PROPRIETARY NOTE</div><div>THIS DRAWING IS THE PROPERTY OF TECHNE AND MUST NOT BE USED COPIED OR DISCLOSED WITHOUT THEIR WRITTEN CONSENT.</div></div> <div><div>No. OFF</div><div>USED ON</div></div>														

	1	2	3	4	5	6	7	No.	DATE	MOD.
DRG. No.	F3510							7	19/07/90	ECN 1079
									15/10/03	REDRAWN
								8	10/01/05	ECN 2658

DO NOT SCALE THIS PRINT

SUITABLE FOR 10mm CUVETTES



FINISH – GLASS BEAD BLAST 150/100 GRIT
TOP & SIDES ONLY
SKIM ALL FACES

DIMENSIONS IN MILLIMETRES	TOLERANCE UNLESS OTHERWISE STATED ± 0.3	ANGLES ± 0.5°	DRILLED & PUNCHED HOLES + 0.2 - 0.0	DRG SIZE A3	DATE	15/10/03	DRAWN	A.NODEN	SHT 1 OF 1
---------------------------	---	---------------	-------------------------------------	-------------	------	----------	-------	---------	------------

SURFACE TEXTURE ✓ ALL OVER EXCEPT AS STATED	MATERIAL No. ALUM. ALLOY 6082 T6	FINISH SEE DRG. REMOVE ALL BURRS AND SHARP EDGES, BREAK CORNERS.	TITLE HOT BLOCK	TECHNE					
---	-------------------------------------	---	--------------------	--------	--	--	--	--	--

IMPORTANT
ALL WORK MUST BE CARRIED OUT TO THE DRAWINGS ENCLOSED WITH THIS ORDER AND NOT TO ANY PREVIOUSLY ISSUED.
ALL DRAWINGS TO BE RETURNED TO TECHNE ON COMPLETION OF WORK.

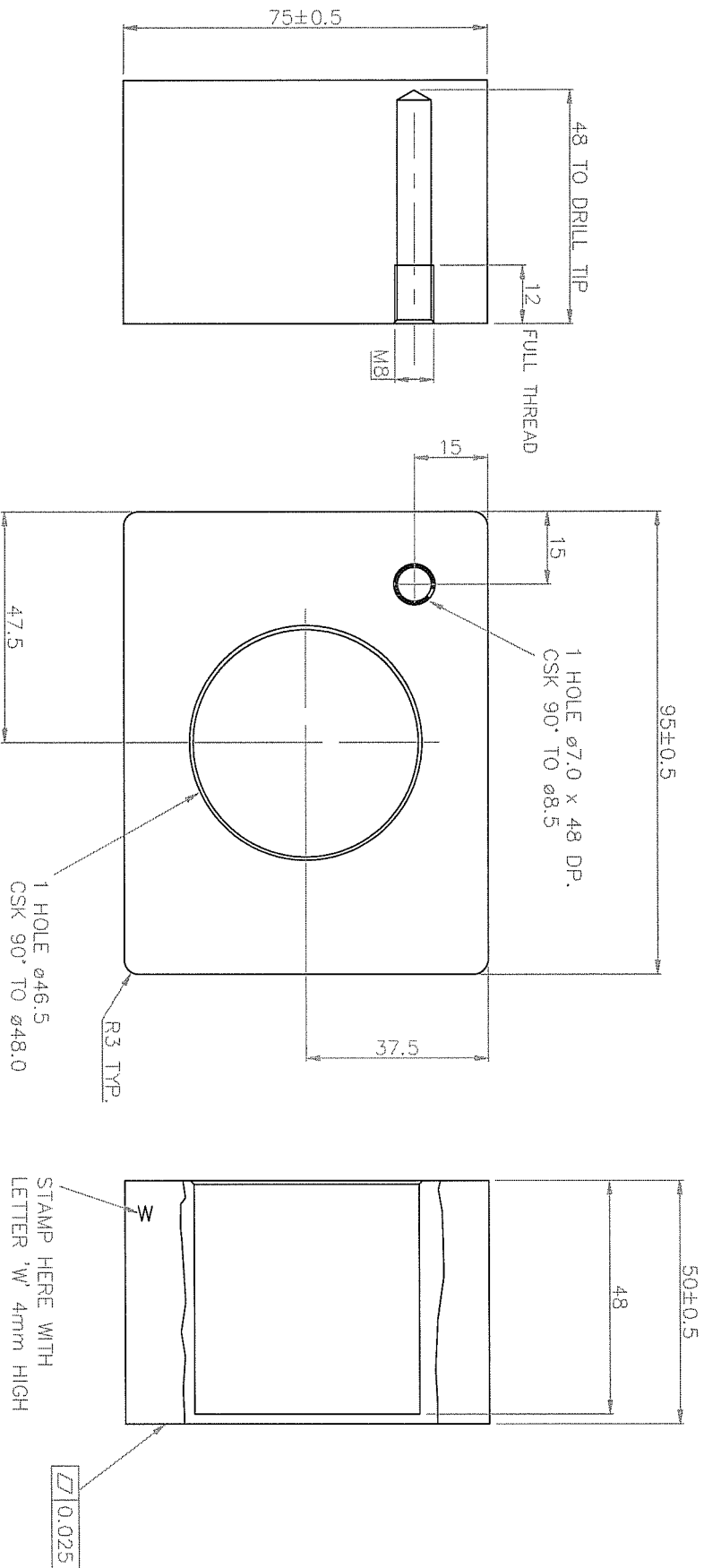
PROPRIETARY NOTE
THIS DRAWING IS THE PROPERTY OF TECHNE AND MUST NOT BE USED COPIED OR DISCLOSED WITHOUT THEIR WRITTEN CONSENT.

No. OFF	USED ON

DRG. No.
F3510

1234567							No.	DATE	MOD.
DRG. No. F4476							1	30/08/97	REDRAWN
							2	10/01/05	ECN 2658

DO NOT SCALE THIS PRINT



FINISH – GLASS BEAD BLAST 150/100 GRIT
TOP & SIDES ONLY

SKIM ALL FACES

DIMENSIONS IN MILLIMETRES		TOLERANCE UNLESS OTHERWISE STATED ± 0.3		ANGLES $\pm 0.5^\circ$		DRILLED & PUNCHED HOLES + 0.2 - 0.0		DRG SIZE A3		No. DATE MOD.	
SURFACE TEXTURE ✓ ALL OVER EXCEPT AS STATED		MATERIAL No. ALUM ALLOY 6082 T6		FINISH SEE DRG. REMOVE ALL BURRS AND SHARP EDGES, BREAK CORNERS.		TITLE HOT BLOCK		DATE 22/11/03		1 30/08/97 REDRAWN	
								SCALE 1:1		2 10/01/05 ECN 2658	
								3rd ANGLE PROJECTION			

IMPORTANT

ALL WORK MUST BE CARRIED OUT TO THE DRAWINGS ENCLOSED WITH THIS ORDER AND NOT TO ANY PREVIOUSLY ISSUED. ALL DRAWINGS TO BE RETURNED TO TECHNE ON COMPLETION OF WORK.

PROPRIETARY NOTE

THIS DRAWING IS THE PROPERTY OF TECHNE AND MUST NOT BE USED COPIED OR DISCLOSED WITHOUT THEIR WRITTEN CONSENT.

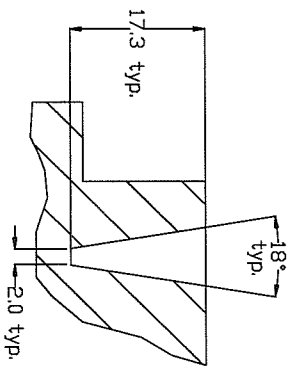
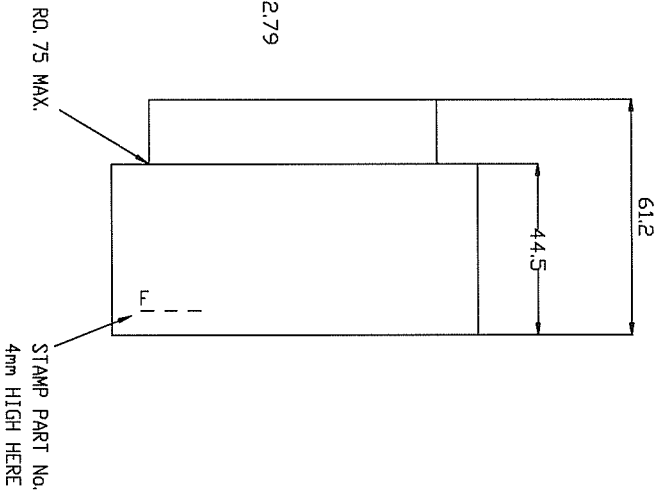
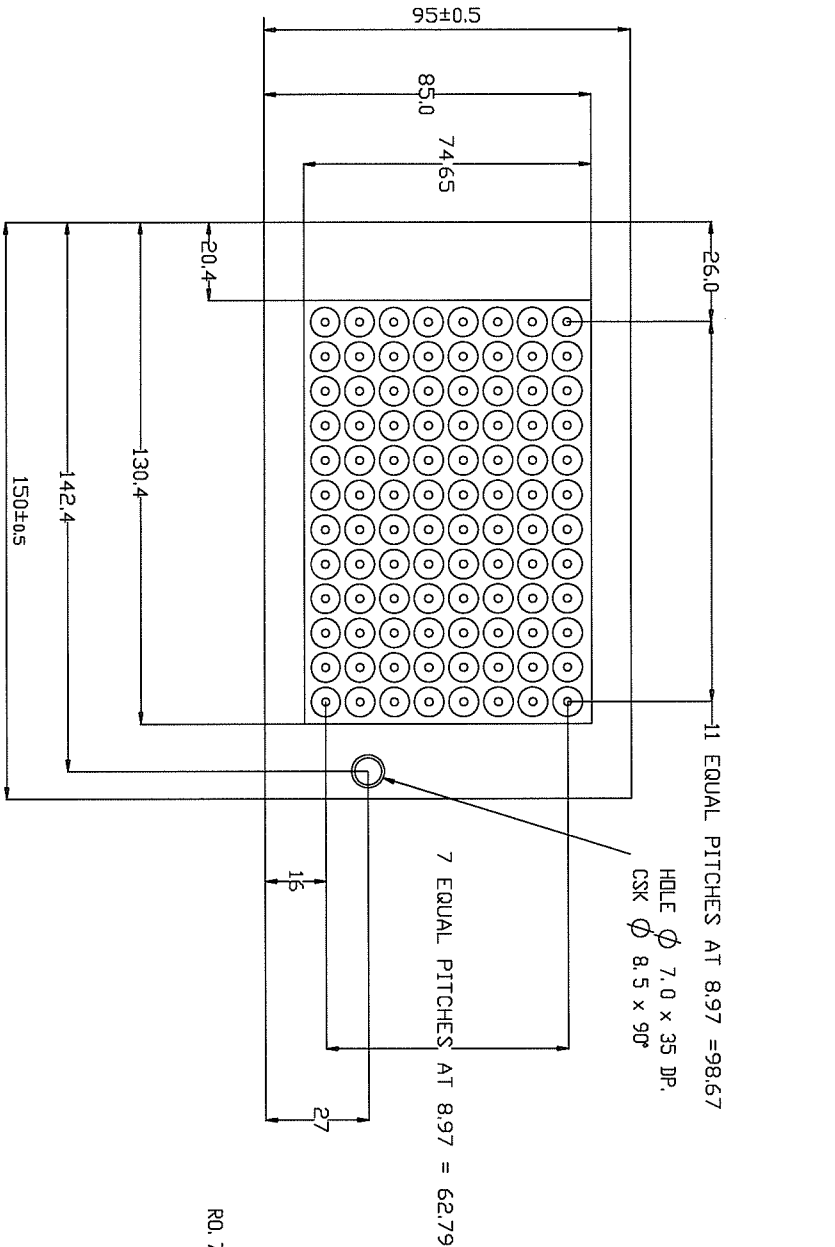
No. USED ON

DRG. No.

F4476



SHT 1 OF 1

TECHNE



WELL DETAIL - 96 POSNS.

SKIM ALL FACES

DO NOT SCALE THIS PRINT		DIMENSIONS IN MILLIMETRES		TOLERANCES UNLESS OTHERWISE STATED		2 DECIMAL PLACES (e.g. 0.60 ±0.1 1 DECIMAL PLACE (e.g. 0.6) ±0.2		FRACTIONS (e.g. 5 DR 5 1/2) ±0.4 ANGLES ±30 MINUTES		MACHINED DIAMETERS TO BE CONCENTRIC TO WITHIN 0.1 F.I.M. ±12 OVER 5mm DIA		DATE 29/3/96		DRAWN A. NODDEN	
SURFACE TEXTURE N/16 ALL OVER UNLESS OTHERWISE STATED		PROJECTION THIRD ANGLE		MATERIAL No.		FINISH		TITLE		BLOCK 96 WELL x 0.2 m l		SCALE		3RD ANGLE PROJ.	
				ALUMINIUM ALLOY 6082 T6		REMOVE ALL BURRS, SHARP EDGES & BREAK CORNERS GLASS BEAD BLAST 150/100 GRIT TOP AND SIDES ONLY								TECHNINE (CAMBRIDGE) LTD.	

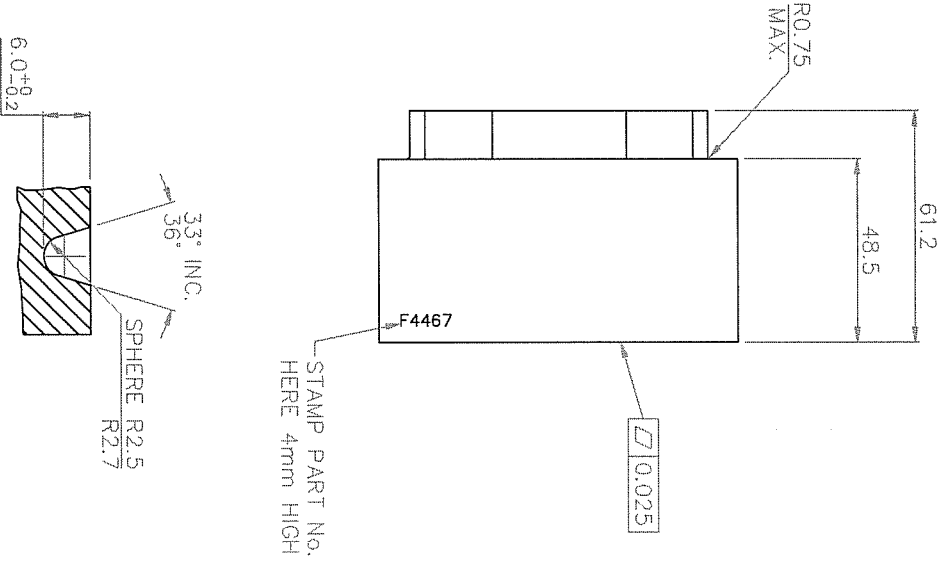
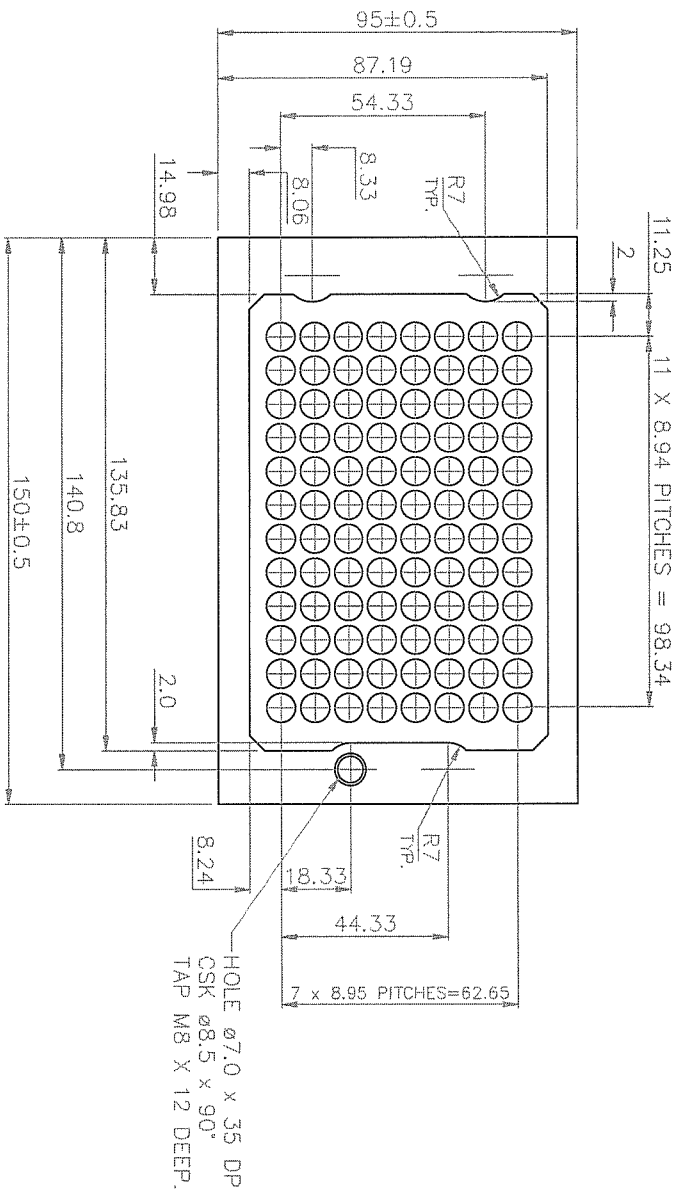
DRG. No. F4473

PROPRIETARY NOTE THIS DRAWING IS THE PROPERTY OF TECHNINE (CAMBRIDGE) LTD. AND MUST NOT BE USED, COPIED OR DISCLOSED WITHOUT THEIR WRITTEN CONSENT.			
No. OFF	USED ON		
1	FDR001M- (ACCESSORY)		
DRG. No. F4473			
6	DRAWN	A. NODDEN	
1	CHECKED		
3RD ANGLE PROJ.			
(CAMBRIDGE) LTD.			

A	22/4/96	WELL DETAIL	DIM 17.3 WAS 17.8
B	01/05/96	ECN 1677	
C	22/10/03	ECN 2526	
D	20/02/04	ECN 2526	
E	Material is 5300677		
F	(was 530676)		
G	150 (was 151)		
H	H8 thread added		
I	10/01/05	ECN 2658	
J	Material is 6082 T6		
K	(was 2014a T6)		
L	09/2011	285/11	
M	H8 thread removed		

DO NOT SCALE THIS PRINT

SKIM ALL FACES



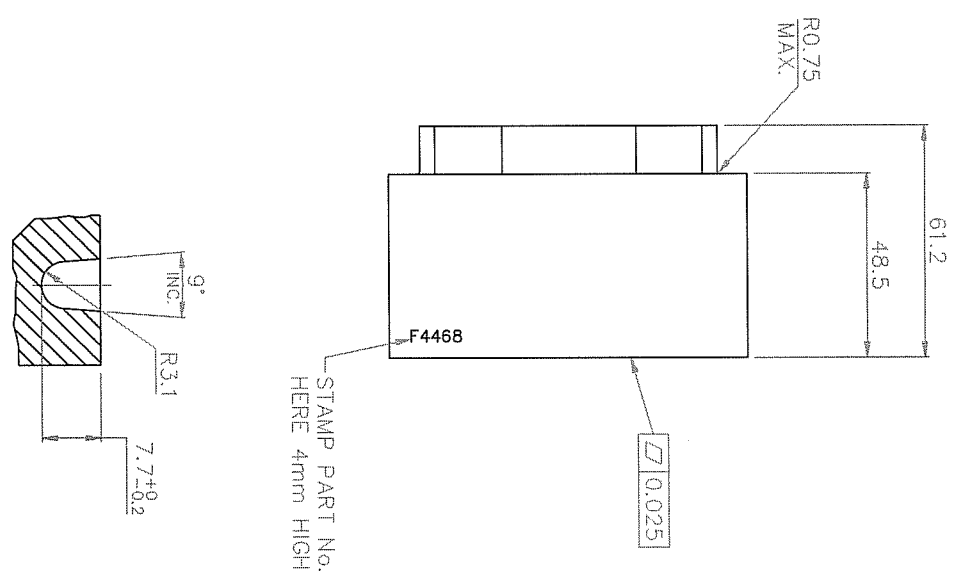
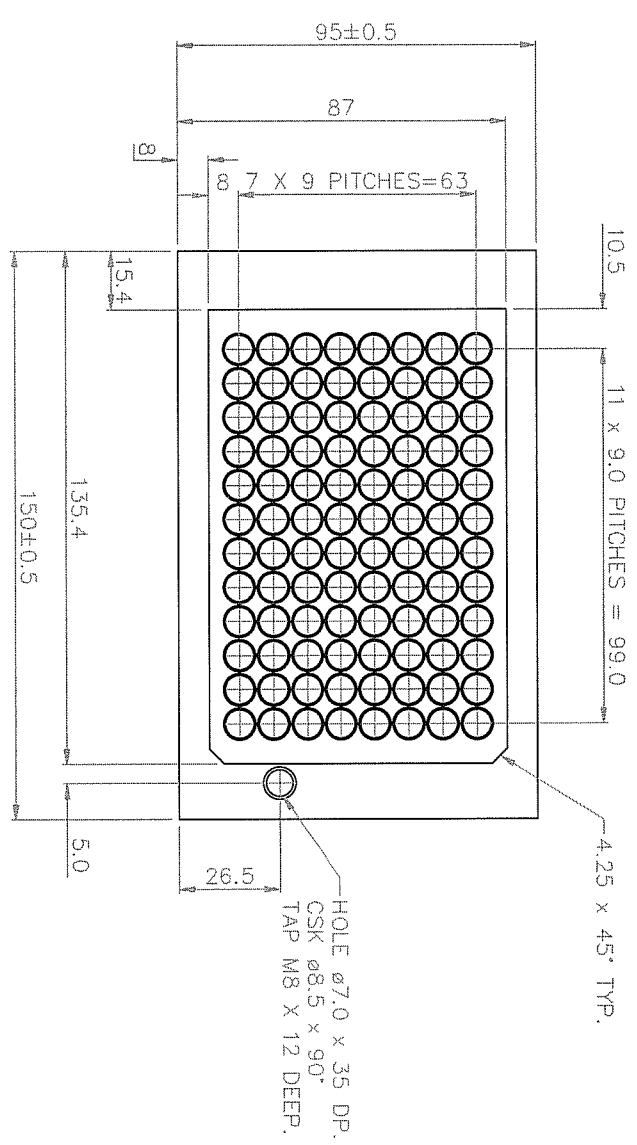
FINISH - GLASS BEAD BLAST 150/100 GRIT
TOP & SIDES ONLY

DETAIL OF WELLS 2:1

DIMENSIONS IN MILLIMETRES	TOLERANCE UNLESS OTHERWISE STATED ± 0.3	ANGLES ± 0.5°	TITLE
SURFACE TEXTURE ✓ ALL OVER EXCEPT AS STATED	MATERIAL No. ALUM ALLOY 6062 T6	FINISH SEE DRG. REMOVE ALL BURS AND SHARP EDGES. BREAK CORNERS.	BLOCK 96WELL TECHINE

DRG. SIZE A2		
DATE	21/10/03	DRAWN
SCALE	1:1	3rd ANGLE PROJECTION
TECHINE		

DRG. No. F4467	
SHT 1 OF 1	
No.	USED ON
OFF	
IMPORTANT ALL WORK MUST BE CARRIED OUT TO THE DRAWINGS ENCLOSED WITH THIS ORDER AND NOT TO ANY PREVIOUSLY ISSUED. ALL DRAWINGS TO BE RETURNED TO TECHINE ON COMPLETION OF WORK.	
PROPRIETARY NOTE THIS DRAWING IS THE PROPERTY OF TECHINE AND MUST NOT BE USED COPIED OR DISCLOSED WITHOUT THEIR WRITTEN CONSENT.	



FINISH — GLASS BEAD BLAST 150/100 GRIT
TOP & SIDES ONLY

DETAIL OF WELLS 2:1

DIMENSIONS IN MILLIMETRES	TOLERANCE UNLESS OTHERWISE STATED ± 0.3	ANGLES ± 0.5°	DRILLED & PUNCHED HOLES ± 0.2	DRG SIZE A2
SURFACE TEXTURE ✓ ALL OVER EXCEPT AS STATED	MATERIAL No. ALUM ALLOY 6082 T6	FINISH SEE DRG. REMOVE ALL BURRS AND SHARP EDGES, BREAK CORNERS.	TITLE BLOCK 96WELL	DATE 21/02/03
				SCALE 1:1
				3rd ANGLE PROJECTION
				DRG. No. F4468
				SHIT 1 OF 1
				TECHNE

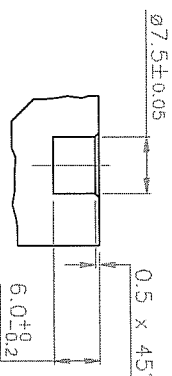
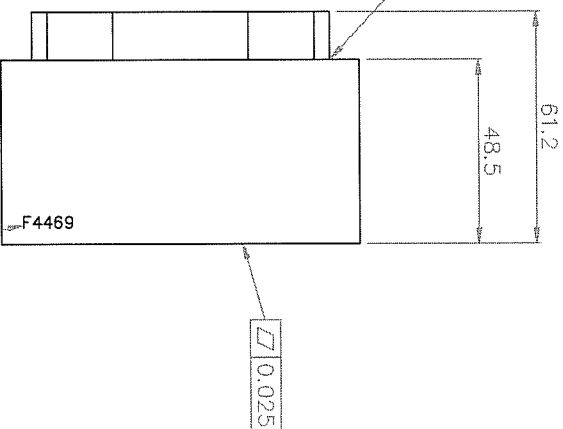
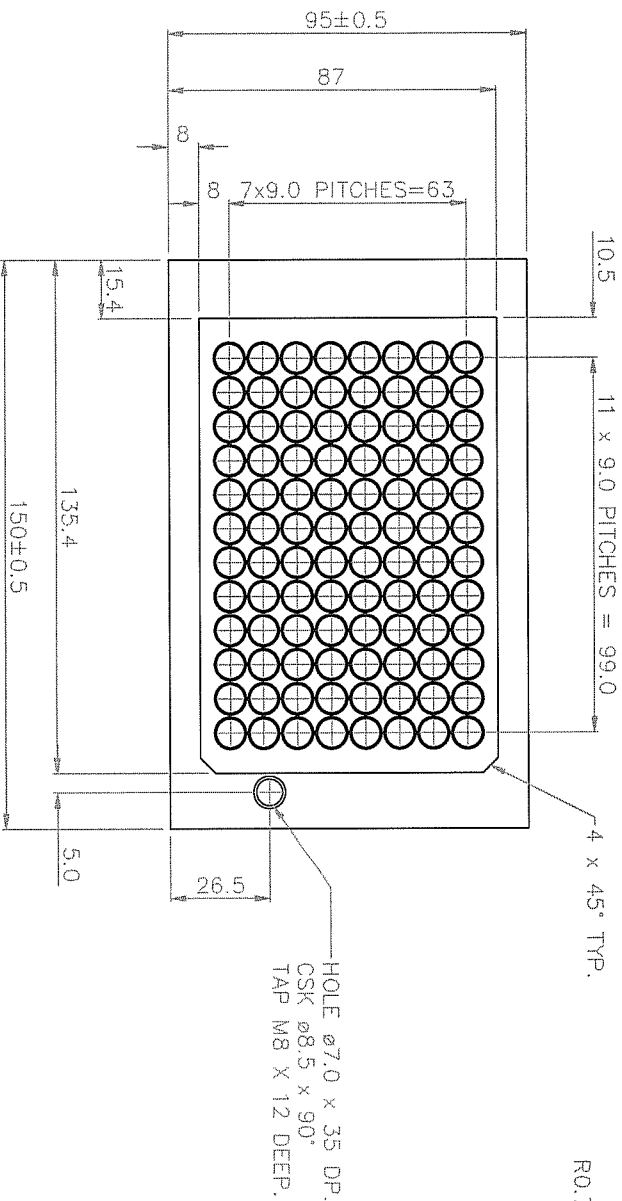
IMPORTANT
ALL WORK MUST BE CARRIED OUT TO THE DRAWINGS ENCLOSED WITH THIS ORDER AND NOT TO ANY PREVIOUSLY ISSUED.
ALL DRAWINGS TO BE RETURNED TO TECHNE ON COMPLETION OF WORK.

PROPRIETARY NOTE
THIS DRAWING IS THE PROPERTY OF TECHNE AND MUST NOT BE USED, COPIED OR DISCLOSED WITHOUT THEIR WRITTEN CONSENT.

USED ON

DRG. No.
F4468

SKIM ALL FACES



FINISH - GLASS BEAD BLAST 150/100 GRIT
TOP & SIDES ONLY

DETAIL OF WELLS 2:1

DIMENSIONS IN MILLIMETRES	TOLERANCE UNLESS OTHERWISE STATED ± 0.3	ANGLES ± 0.5°	DRILLED & PUNCHED HOLES ± 0.2
SURFACE TEXTURE ✓ ALL OVER EXCEPT AS STATED	MATERIAL No. ALUM ALLOY 6082 T6	FINISH SEE DRG. REMOVE ALL BURRS AND SHARP EDGES, BREAK CORNERS.	TITLE BLOCK 96WELL

DRG. No.
F4469

DRG SIZE A2
DATE 21/10/03
SCALE 1:1

DRAWN A.AODEN

3rd ANGLE PROJECTION

TECHNE

No.	DATE	MOD.
3	10/10/01 21/10/03 13/02/04 20/02/04	ECN 1178 REDRAWN ECN2516 ECN 2526
4	10/01/05	ECN 2658

IMPORTANT
ALL WORK MUST BE CARRIED
OUT TO THE DRAWINGS
ENCLOSED WITH THIS ORDER
AND NOT TO ANY PREVIOUSLY
ISSUED DRAWINGS TO BE
RETURNED TO TECHNE ON
COMPLETION OF WORK.

PROPRIETARY NOTE
THIS DRAWING IS THE
PROPERTY OF TECHNE AND
MUST NOT BE USED COPIED
OR DISCLOSED WITHOUT THEIR
WRITTEN CONSENT.

No.
OFF USED ON

