

CompactDry™

Simple and Easy Dry Media for Microbial Count and Detection

ETB

For *Enterobacteriaceae*

NordVal

MicroVal



The ready-to-use CompactDry ETB plate combines the properties of chromogenic dry media and gel contact plates.

CompactDry ETB detects *Enterobacteriaceae* bacteria, the medium contains a chromogenic enzyme substrate and forms red/purple coloured colonies.

GRAM negative bacteria are commonly found in the environment and many foodborne pathogenic bacteria fall under

this family. *Enterobacteriaceae* testing is a release parameter in various food, drinks, pharmaceutical, nutraceutical and cosmetic samples.

CompactDry ETB ready to use plate enabling easy culture for *Enterobacteriaceae* count in solid food stuff (homogenize with buffer solution), water/liquid samples and swab based environmental testing.



Temperature
AOAC/ MicroVal/
NordVal: 37 +/- 1 °C



Incubation time
24 +/- 2 hours



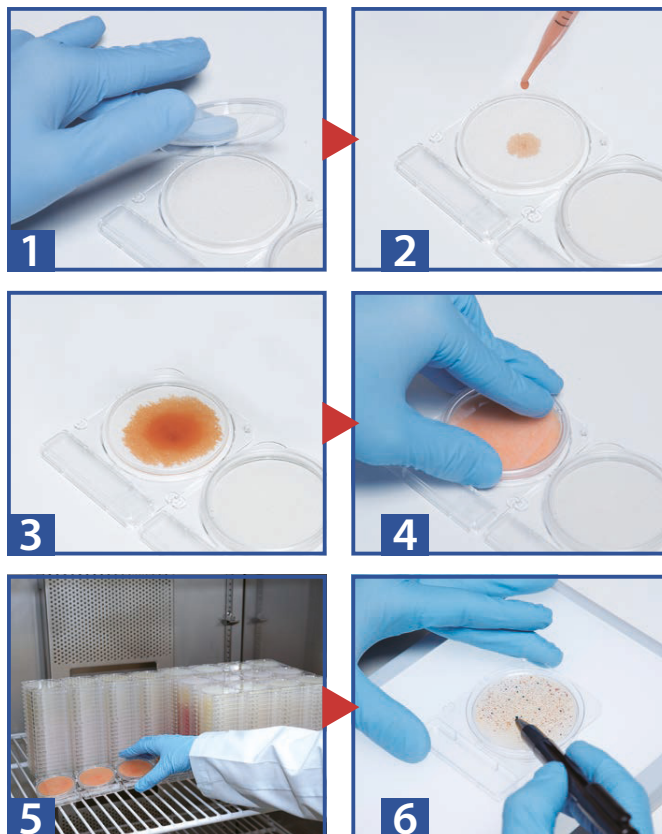
Shelf life
16 months



Storage
RT +1 °C to +30 °C

CompactDry Protocol

- 1** Open the cap.
- 2** Dispense 1 mL of sample in the centre of the CompactDry plate.
- 3** Sample automatically diffuses evenly across the dry sheet transforming it into a gel within seconds.
- 4** Replace the cap, label and turn the plate over.
- 5** Incubate for the appropriate time and at required temperature.
- 6** Following incubation, count the number of coloured colonies.



Incubation temperature

AOAC/ MicroVal/ NordVal: 37 +/- 1 °C

Incubation time

24 +/- 2 hours

Interpretation

Enterobacteriaceae are red/purple coloured. Red/purple-coloured colonies plus any other coloured colonies form the total gram negative bacteria count.

| Product name | Packages | Product number | Shelf life | Approvals |
|----------------|-------------|----------------|------------|-----------------------------|
| CompactDry ETB | 40 plates | 54055-ETB-0040 | 16 months | MicroVal NordVal AOAC |
| | 240 plates | 54055-ETB-0240 | | |
| | 1400 plates | 54055-ETB-1400 | | |