

# LABFLAME AERO

The airflow flame solution



## Conceptual difference

- flaming with the airflow  $\diamond$  eliminates dancing flames
- 360° operational angle  $\diamond$  for any hood enclosure
- sturdy flame shape  $\diamond$  precise flame sterilization
- no turbulences  $\diamond$  increased safety in BSC cabinets
- flame on demand  $\diamond$  economic gas consumption

Ideal for use in biosafety cabinets





# LABFLAME AERO

Aero offers the possibility to install a fixed and safe flame sterilization station, always ready for a quick safety hot shot.

## Air Dynamics

The new LabFlame aero is designed to enhance the flame sterilization under air dynamic conditions. While standard safety burners fight with flames dancing against the air stream, with the risk of incomplete sterilization based on deviated flames, LabFlame aero can flame with the stream and offers an improved sturdy flame shape.

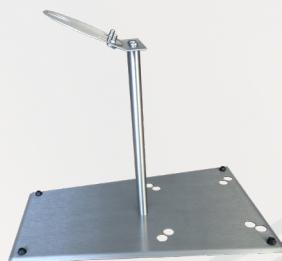
Aero can be mounted upside down and flame along with the flow. This simplifies the precise sterilization handling of e.g. bottle necks, caps, threads and increases the safety of effective sterilizations. Ideal use in laminar air flows, eliminating turbulences and dancing flames.

## Flame on demand

Immediate flames ignition – via footswitch, touch free IR detection or manual start. Aero offers a compact stainless steel body with a variety of mounting accessories for convincing economics in limited enclosure spaces. No workspace loss if mounted on sidewalls or base stand.

## Advantages

Safe automatic re-ignition and gas cut off  
No media spills in burner head – less cleaning



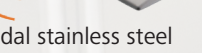
Safety base stand  
stainless steel  
LF2.110.490



Safety adapter for gas cartridges with  
pressure regulator and DVGW-tubing (0.5 m)  
C 206 - 1.5: LF2.110.800  
additional with stainless steel stand  
CV 300 - 1.5: LF2.110.831  
CV 470 - 1.5: LF2.110.850



Foot pedal stainless steel  
LF 6.000.402



Radio controlled foot pedal with RF-Stick  
LF6.000.404-RF

Foot pedal Mini  
LF6.000.403

IR-motion sensor for  
touch-free flame activation  
stainless steel

LF6.000.406



## Functions:

Button: Start-Stop + timer, max 60 min  
Foot pedal: flame on demand

## Safety features

automatic re-ignition  
heat and pressure monitoring with  
safety gas cut off

## Gas supply and consumption

Gas connection: 1/4" left hand thread with gas filter  
Gas types: I3P 1.5 bar liquid gas  
Connected load: 38 g/h  
Cartridge operation (type-time): C 206 - 4h / CV 300 - 6h / CV 470 - 11h

## Flame characteristics

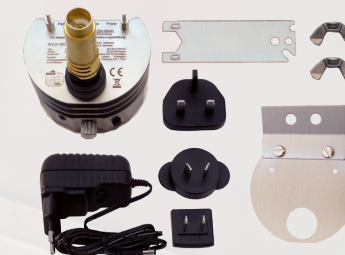
Max. flame temperature: approx. 1200 °C  
Flame measurements (h x Ø): max. 120 x 10 mm  
Temperature threshold level: 500 W

## Electrical

Power consumption: 2 VA (Stand-by max 0,1 VA)  
Switching power supply: 100-240V / 50/60Hz / 0,3A; 9V DC / 1,3A  
Level 6 (Stand-by Verbrauch max. 0,1 W)

## Mechanical

Burner head: removable  
Dimensions with burner head 75 x 88 mm / 135 x 88 mm, 580 g



## LabFlame Aero including

Nozzle for propane / butane gas  
Removable burner head  
Bracket with 2 wing nuts for  
upside down mounting  
wrench 17 mm, switching power  
supply (worldwide, level 6)  
Instruction manual  
LF2.110.000-L

Safety medium pressure regulator 1.5 bar  
for gas cylinders of 5, 11 or 33 kg  
LF2.110.150

DVGW Safety tubing for threaded  
connection 3/8" L $\leftrightarrow$ 1/4" L (1.5 m)  
LF2.110.310

Gas leak protection 1.5 bar:  
LF2.110.131